

# taurus



ENGLISH / AFRIKAANS

## PROCESSADOR MAXIM

complies with  
INTERNATIONAL  
IEC60335  
SAFETY SPECIFICATIONS

**t**  
1100W

2 YEAR  
WARRANTY

Model:  
913110

PLEASE READ ALL INSTRUCTIONS BEFORE USE

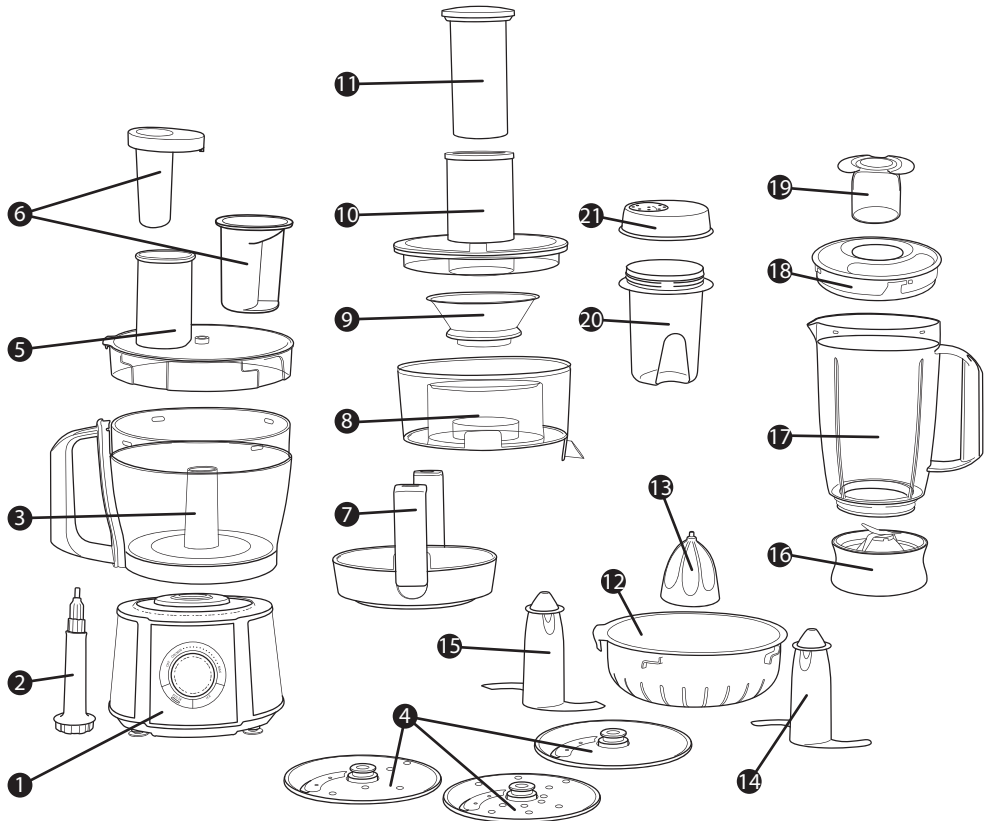


# ENGLISH MANUAL

## Dear customer,

Many thanks for choosing to purchase a TAURUS brand product.

Thanks to its technology, design and operation and the fact that it exceeds the strictest quality standards, a fully satisfactory use and long product life can be assured.



1. Motor unit

2. Power shaft

3. Food processing bowl

4. Shredding and slicing blades

5. Food processing lid

6. Pusher assembly

7. Juicing attachment

8. Transparent pulp collector

9. Filter

10. Juice extractor lid

11. Fruit presser

12. Citrus press

13. Cone

14. Mixing accessory

15. Blade assembly

16. Blender/chopper blade assembly

17. Blender jug

18. Blender lid

19. Measuring cup/ quick access lid

20. Chopping cup

21. Chopper lid

Read this user manual carefully before you use the appliance and save it for future reference.

### Important Safety Instructions:

When using electrical appliances, basic safety precautions should always be followed. Please read the following safety instructions and keep this instruction manual for future reference.

- Read all these instructions before use.
- Do not immerse the appliance its power cord or

plug in water or any other liquid. Do not place the appliance or its power cord under running water.

- This appliance is intended for use by adults only.
- Children should be supervised at all times to ensure they do not play with this appliance.
- Always remove the plug from the wall socket when the appliance is not in use. Allow the appliance to cool down completely before undertaking any cleaning task. Before attaching or detaching accessories ensure that the appliance is switched off.

- Do not operate this appliance with a damaged power cord or plug. If the appliance is damaged in any manner discontinue use immediately and return the appliance to the nearest authorised service centre for repair.
- The use of accessories or attachments not recommended by the manufacturer may cause injuries and damage to the appliance.
- Do not use this appliance outdoors.
- Do not let the power cord hang over the edge of a table or let it touch any hot surfaces.
- Do not place this appliance on or near any heat source, eg. an electric burner or in a heated oven.
- To disconnect, turn the speed selection dial to the "OFF" position, switch it off at the wall socket and then remove the plug.
- Oversized foods and metal utensils must not be inserted into the appliance as they may cause a fire or injury.
- A fire may occur if the appliance is covered or if it is touching any flammable material, eg. curtains or drapes while it is in operation.
- Do not clean this appliance with any abrasive materials.
- Do not store any items in this appliance even when it is not in use.
- Do not put your hands inside the blender jug when the appliance is connected to the wall socket and when the blender jug is seated on the base.
- Always be careful when cleaning the blades as they are sharp, always exercise extreme caution.
- Do not operate the appliance for longer than 2 minutes at a time.
- If the appliance becomes hot during use, switch the appliance off and then disconnect it from the wall socket and allow it to cool down, before using it again.
- This appliance is not intended for use by persons (including children) with reduced physical, sensory or mental capabilities, or lack of experience and knowledge, unless they have been given supervision or instruction concerning use of the appliance by a person responsible for their safety.
- Check if the voltage indicated on the rating label corresponds to the mains voltage before you connect the appliance to a wall socket.
- The use of timers, plug adaptors and extension leads is not advised.
- Never leave the appliance unattended while it is switched on.
- Never use your fingers or an object (e.g. a spatula) to push ingredients down the feeding tube while the appliance is running. Only use the pusher for this purpose.
- Be very careful when you handle the slicing discs, blender blade unit or food processor blade unit. Be especially careful when you remove them from the food processor bowl or blender jar and when you clean them as they are very sharp.
- This appliance is intended for household use only.

#### **Before first use:**

- Clean all the parts of the food processor that will come into contact with food.
- Fully unwrap the power cord from the power cord storage before use.

#### **Caution**

- Never switch off the appliance by turning the blender jar, the food processor bowl or the juicer bowl (the product would be switched off as the safety switch will be disengaged). Always switch off the appliance by turning the speed selection dial to the "OFF" position.
- Switch off the appliance before you attach or detach any of the accessories.
- Unplug the appliance immediately after use.
- Always unplug the appliance before you reach into the blender jar or food processor bowl with your fingers or an object (e.g. a spatula).
- Wait until all the moving parts have stopped before you remove the lid of the bowl, juicer, chopper or blender.
- Do not exceed the maximum level indicated on the food processor bowl or the blender jar.
- Do not use the processor if the motor body or any of the attachments are damaged. Take the appliance or attachment to your nearest authorized service centre for repair.
- Consult this user manual for the correct quantities and processing times.
- Thoroughly clean the parts that come into contact with food before you use the appliance for the first time.
- Let hot ingredients cool down before you process them (max. temperature 80°C/175°F).

#### **Built-in safety lock**

This feature ensures that you can only switch on the appliance if you have assembled the blender jar with blade unit, the food processor bowl, the juicer bowl with coupling unit or the citrus press correctly on the motor unit. If the blender jar with blade unit, the food processor bowl, the juicer bowl with coupling unit or the citrus press is assembled correctly, i.e. when it has been turned in the direction of the 'locked' symbol as far as possible and a 'click' is heard, the built-in safety lock will be unlocked.

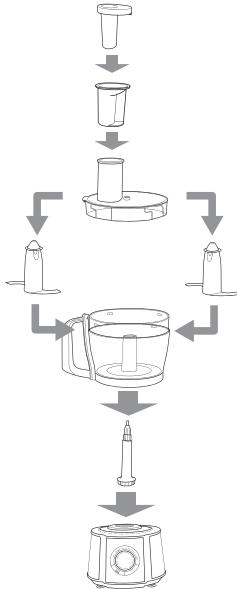
Please ensure that the unit is assembled properly for whichever attachment you are using. If the unit is not assembled properly it will not switch on. Please follow the below assembly instructions explicitly in order for the appliances' safety lock to be disabled and for the machine to work properly.

#### **Food Processor Attachment:**

- Attach the power shaft by inserting its base into the motor unit.
- Place the food processing bowl onto the unit, over the power shaft. Position the bowl with the handle at the "2 o'clock" position and then turn it clockwise until it firmly clicks into place. The

safety switch is now engaged. The bowl handle should be in the "3 o'clock" position.

- Then place the blade assembly on the centre shaft ensuring the blade unit engages and that it is fitted securely. Place the lid over the bowl with the feeding tube in the "2 o'clock" position and turn clockwise until the lid clicks firmly into place. The feeder tube should now also be at the "3 o'clock" position which means the safety switch is engaged.



**NOTE: ONLY USE THE PUSHER PROVIDED TO PUSH FOOD INTO THE PROCESSING BOWL. NEVER USE ANY OTHER UTENSILS OR OBJECTS.**

#### **Blade - Tips and Warnings**

- Do not let the appliance run for too long when you are chopping hard foodstuffs such as hard cheese or chocolate as these ingredients might become too hot and start to melt.
- Always put the food processor blade unit in the food processor bowl before you add the ingredients.
- Do not use the food processor blade to chop very hard ingredients such as coffee beans, nutmeg, turmeric and ice cubes, as this may cause the blade unit to become blunt or may damage it.
- Do not fill the bowl beyond the "MAX" indication.
- The standard processing time for chopping is 30-60 seconds.
- If you chop onions, press the pulse button a few times to prevent the onions from becoming too finely chopped.
- If food sticks to the blade unit or to the inside of the food processor bowl:
- Switch off the appliance both on the appliance and at the wall socket.

- Remove the lid from the food processor bowl.
- Remove the ingredients from the blade unit or from the wall of the bowl with a spatula.
- Exercise extreme caution when dealing with the blade as it is very sharp, take care not to run your finger along the sharp blade.

#### **4Mixing Attachment:**

- Attach the power shaft by inserting its base into the motor unit.
- Place the food processing bowl onto the unit, over the power shaft. Position the bowl with the handle at the "2 o'clock" position and then turn it clockwise until it firmly clicks into place. The safety switch is now engaged. The bowl handle should be in the "3 o'clock" position.
- Then place the mixing accessory on the centre shaft ensuring the blade unit engages and that it is fitted securely. Place the lid over the bowl with the feeding tube in the "2 o'clock" position and turn clockwise until the lid clicks firmly into place. The feeder tube should now also be at the "3 o'clock" position which means the safety switch is engaged.

#### **Mixing Tips and Warnings**

- Always put the mixing accessory in the food processor bowl before you add the ingredients.
- The standard processing time for all mixing jobs is 30-120 seconds.

#### **Slicing/Shredding Discs**

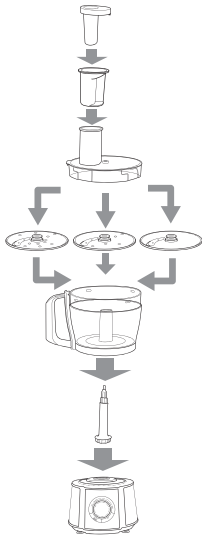
- Attach the power shaft by inserting its base into the motor unit.
- Place the food processing bowl onto the unit, over the power shaft. Position the bowl with the handle at the "2 o'clock" position and then turn it clockwise until it firmly clicks into place. The safety switch is now engaged. The bowl handle should be in the "3 o'clock" position.
- Then place the desired blade on the centre shaft ensuring it is blade engages with the Power shaft, and that it is fitted securely. Remember that each disc can be used on both sides, one side for slicing and the other for shredding.
- Place the lid over the bowl with the feeding tube in the "2 o'clock" position and turn clockwise until the lid clicks firmly into place. The feeder tube should now also be at the "3 o'clock" position which means the safety switch is engaged.
- Do not exert too much pressure on the pusher when you press ingredients down the feeding tube.
- Do not let the appliance run for too long when you are shredding (hard) cheese. Otherwise the cheese becomes too hot and starts to melt and turns lumpy.
- Do not use the shredding disc to shred chocolate. Only use the food processor blade unit for this purpose.
- Do not fill the bowl beyond the "MAX" indication.
- Pre-cut large ingredients to make them fit into the

feeding tube easier.

- Fill the feeding tube evenly for the best results.
- When you shred or grate soft ingredients, use a low speed to prevent the ingredients from turning into a puree.
- If the ingredients you are going to shred or slice have a small diameter, put the outer pusher in the feeding tube to make the feeding tube smaller. Then use the inner pusher to push the ingredients down the feeding tube.
- When you have to process a large amount of ingredients, process small batches and empty the bowl between batches.

#### Slicing/Shredding Disc - Tips and Warnings

- Do not touch the cutting edge.
- Do not fill the bowl beyond the "MAX" indication.

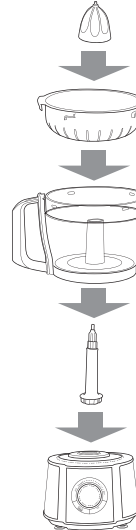


#### Citrus Press

- Attach the power shaft by inserting its base into the motor unit.
- Place the food processing bowl onto the unit, over the power shaft. Position the bowl with the handle at the "2 o'clock" position and then turn it clockwise until it firmly clicks into place. The safety switch is now engaged. The bowl handle should be in the "3 o'clock" position.
- Then place the citrus press on the centre shaft ensuring the blade engages with the power shaft, and that it is fitted securely. There is a plastic lip on the one side of the citrus press, this should be placed to the left of the bowl handle. The press should then be rotated clockwise until it engages with the safety lock of the handle.
- Place the cone over the centre of the sieve ensuring the gears engage and the cone fits securely.
- Do not fill the bowl beyond the "MAX" indication.
- Set the speed selection dial to the "MIN" speed setting.

- Press the citrus fruit onto the cone.
- Take care not to press your hand directly onto the cone as the motor is powerful and it may cause injury.

**Note:** stop pressing from time to time to remove the pulp from the sieve. When you have finished pressing or when you want to remove the pulp, switch off the appliance (both on the appliance and at the wall socket) and remove the bowl from the appliance.



#### Juice Extractor

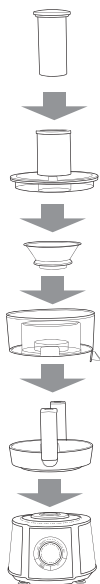
- Attach the base of the juicing attachment on top of the motor housing with the juice spout at the "12 o'clock" position. Rotate clockwise until the 3 o'clock position when you will hear a "click" as the safety lock engages. The locking arms will now be at the "12 o'clock" and "6 o'clock" positions
- Place the transparent pulp collector on the base of the juicing unit ensuring that it fits securely.
- Then place the filter in the centre of the pulp collector ensuring it fits securely and the gears engage properly. There will be a small gap between the filter and the centre plastic of the pulp collector.
- Then place the lid of the juice extractor attachment on top of the pulp collector. Ensure that the "handles" for the locking mechanism are placed in the appropriate grooves on the pulp container so that the safety lock can engage once the lid is locked onto the pulp collector.
- Lift the locking arms of the juice extractor base and place them over the "handles" of the lid. Then push the base of the locking arm inwards towards the juice extractor, there will be a "click" as they lock into place, do this on both sides locking both arms. Plug the appliance into a wall socket and place the prepared ingredients for juicing into the feeder tube. Switch the speed selection dial to "MIN" and

use the food pusher provided to push the ingredients down towards the filter.

- Never insert your hand or another object (e.g. a fork, knife, spoon or spatula) into the feeding tube. Only use the pusher supplied with the appliance for this purpose. Wait until the filter has completely stopped rotating before you remove the lid.
- If for some reason the appliance is on but the motor does not rotate it means that the safety lock is not engaged. Please ensure that all the parts are fitted securely and properly. Ensure the safety lock is engaged with the motor housing.

### Tips for Juicing

- The standard processing time for juicing is 30-90 seconds.
- Peel citrus fruits, pineapples, melons, etc. before you juice them.
- Remove the pips of cherries, plums, apricots, peaches, etc. before you juice them.



### Blender

- The blender and chopper share the same blade assembly attachment. Ensure that the sealing ring (a small rubber seal at the base of the blade unit) is already fitted to the blade assembly before the jug is fitted to it.
- Attach the blade assembly to the blender attachment by screwing the jug in a clockwise direction onto the blade assembly.
- Place the blender on the motor housing with the handle at the "12 o'clock" position and rotate it clockwise until the handle is at the "3 o'clock" position and the safety lock is engaged.
- Remove the lid and add the ingredients you wish to

blend. Place the lid on top of the jar ensuring that the spaces on the rim of the lid are aligned with the ridges inside the blender jug. Twist the lid clockwise until the lid is locked in place.

- To add liquid ingredients during processing, remove the measuring cup and pour ingredients into the blender jar through the hole in the lid.

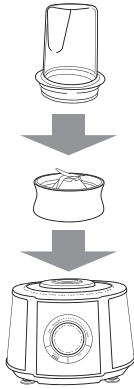
### Tips for blending

- Precut solid ingredients into smaller pieces before you process them.
- If you want to prepare a large quantity, process small batches of ingredients instead of a large quantity at once.
- When you process a liquid that is hot or tends to foam (e.g. milk), do not put more than 1 litre in the blender jar to avoid spillage.
- If you are not satisfied with the result, switch off the appliance and stir the ingredients with a spatula. Remove some of the contents to process a smaller quantity or add some liquid.
- If the blender is not blending hard fruit or other ingredients to the desired consistency then chop the contents into smaller pieces or add additional liquid.
- If the ingredients stick to the wall of the blender jar:
  - Switch off the appliance and unplug it.
  - Remove the lid and use a spatula to remove the ingredients from the wall of the jar.
  - Keep the spatula at a safe distance of approx. 2cm from the blades.
  - Never open the lid when the blade is still rotating.
- Never put any utensils (ie. a spatula) or other instruments into the blender to loosen foodstuffs while the blades are rotating or while the unit is switched on.
- Always let the appliance cool down to room temperature after you have processed two batches.



## Chopper Attachment

- Place the ingredients to be chopped into the chopping cup while it is upside down.
- Place the blade unit over the top of the chopping cup with the blades facing downwards and rotate the blade assembly clockwise.
- Turn the chopper right side up with the blade unit at the bottom.
- Place the chopper on the motor housing with the indentation in the plastic of the chopping cup at the "11 o'clock" position and rotate in clockwise until it is in the "2 o'clock" position.
- Use the speed selection dial to select the appropriate speed for chopping.
- When removing the chopper from the motor housing take care not to twist the chopper off the blade unit. Rather twist the chopper at the blade unit in order to avoid the contents from spilling.
- Turn the chopper upside down and remove the blade unit.
- If you would like to keep the contents in the chopper use the lid provided. Screw this onto the chopper as you did the blade unit.



## Other Functions:

### Pulse Function

- This unit has a Pulse function. This can be used when you want complete control of chopping/blending.
- The blades will rotate at maximum power only while you are holding the "Pulse" button.
- Ensure the speed selection dial is in the "ON" position when using the pulse function.
- Avoid holding the button continuously for more than 15 seconds at a time.
- This function is specifically for the blender, chopper and food processor attachments and should not be used for the juice extractor or citrus juicer attachment.

## Ice Crush Function

- The "ICE" function can be used only when using the blender attachment.
- This will rotate the blades for a preset time with brief intervals when the button is pressed.
- This will happen continuously until the button is pressed again to switch off this function.
- The speed selection dial must be in the "ON" position.
- Always remember to press the "ICE" button again when the ice has reached the desired consistency in order to disable this function and avoid injury.
- Switch the appliance off both on the appliance body and at the wall socket before attempting to remove the jug from the motor body.
- Never use utensils or your hands to loosen the ice while the jug is still attached to the motor housing.
- Never touch the blades with your hands as they are very sharp.

## Cleaning

- Always unplug the appliance from the power wall socket before you remove accessories or clean the motor unit.
- You are able to quickly and easily preclean the food processor bowl and blender jar with the pulse button. Simply add some water and washing-up liquid to the dirty bowl or jar and secure the lid. Then use the pulse button until the bowl or jar is clean. When you preclean the food processor bowl in this way, make sure the food processor blade is assembled in the bowl.
- Once you have pre-cleaned you may use warm soapy water to clean all the attachments.
- Always exercise extreme caution when washing the blades/blade assembly. Never run your hand or fingers along the blades.
- To clean the appliance body, use a damp cloth to wipe it and dry thoroughly.
- Never submerge the motor unit and cord in water or any other liquid, and never place them under running water.

## Recycling

Do not throw the appliance away with normal household waste at the end of its life. Rather hand it in at an official collection point for recycling. By doing this, you help to preserve the environment.





# taurus

**2 YEAR  
WARRANTY**

**1 YEAR RETAIL  
+1 YEAR EXTENDED**

taurusappliances.co.za

Register Online

Thank you for purchasing a Taurus product. Taurus guarantees that your product has been thoroughly inspected and tested before being dispatched and is free from mechanical and electrical defects and complies with the applicable safety standards. With every Taurus product purchased you get a 2 year warranty as detailed in the terms and conditions below.

## **First Year – 1 Year Retail Warranty:**

Should defects due to faulty parts or workmanship develop, under normal domestic use, within 12 months from the original date of purchase please return the product to the store from where it was purchased for a refund or replacement.

## **Second Year – 1 Year Extended Warranty**

Taurus takes pride in their product quality and therefore offer an extended 12 month warranty over and above the 1 Year Retail Warranty. Should defects due to faulty material or workmanship develop, under normal domestic use, after the 12 month period and within 24 months from the original date of purchase, please return the product postage pre-paid to Taurus for repair. Taurus will repair the product free of charge and return it to you directly. Taurus will replace a product with a similar product in the same or better condition, if the repair cannot be conducted for whatever reason.

NB: The 1 Year Extended Warranty is only valid for customers who have registered their warranty online at [www.taurusappliances.co.za](http://www.taurusappliances.co.za) within the first year after making their purchase. See overleaf for details and instructions.

## **Before returning your product, check the following:**

- Your household mains supply socket is in good condition, working and switched on.
- The mains supply circuit is not overloaded (White trip switch on your DB board is off).
- You have read the trouble shooting guide in your Instructions for Use.
- All accessories and parts are present.

## **The following conditions apply:**

1. Please ensure you retain your receipt as this must be presented when making a claim under the terms of the guarantee. It is impossible to determine the guarantee period without proof of purchase, so please keep this in a safe place. (NB. Your guarantee can be scanned onto the Taurus web site for safe storage – see reverse side for details.)
2. If a refund or exchange is required the product must be complete with all accessories, parts and packaging. Missing parts will render the guarantee void.
3. Upon receipt of your appliance, check it for any transport damage to ensure it is safe for use. Return it to the store as soon as possible for exchange if damaged. The guarantee is void if products are damaged after

use, so please do not use the damaged product.

4. Your product is designed for normal domestic household use. Failure to read and comply with the instructions for use, cleaning and maintenance will render your guarantee void, so please read these instructions carefully to ensure your safety, and to get the most effective use from the product. (e.g. not removing lime scale; water deposits; insect infestation, and/or burnt products)
5. Any abuse, negligent, improper or accidental use or care will render the guarantee void and Creative Housewares (Pty) Ltd will not be liable for any loss or damage.
6. Any attempted repair, or replacement of unauthorised parts will render the guarantee void, so please contact an authorised service centre or service agent for any service or repair requirements.
7. NB: The guarantee on replaced products will be from the original date of purchase and not from when the date replacement was made.
8. All repairs carry a 3 month guarantee even if this falls outside of the 2 year guarantee period.
9. Taurus will attempt to conduct repairs within reasonable time in line with industry standards but cannot be held responsible or liable for any circumstances not under our control.

## **Repairs Out of the Warranty Period**

If service or repair becomes necessary outside the warranty period, this service is still available however all transport/postage, spares and labour costs will be for the customers' account. All chargeable repairs will require the customers' written acceptance of the quote. Once the go-ahead has been received Taurus will undertake to conduct the repair within a reasonable time and maintain the condition of the product as received. All repairs are guaranteed for 3 months from the date of the repair.

For any service, enquiries and complaints please contact our Customer Care on 086 111 5006 or e-mail [help@creativehousewares.co.za](mailto:help@creativehousewares.co.za) from 08h00 to 15h00 Monday to Friday excluding public holidays. Please also note that the company is normally closed for 2 weeks around Christmas and New Year.

Please send all products for repair postage pre-paid to one of the service centres listed on the back of this page.

# ONLINE WARRANTY REGISTRATION

## Why register your warranty?

We at Taurus pride ourselves on bringing premium quality appliances to market, and as a commitment to this level of quality we offer a 2 year warranty (1 Year Retail + 1 Year Extended) on all of our products. We often hear that our customers lose their receipts and can therefore no longer claim if they have a problem. To take advantage of the 1 Year Extended Warranty you will need to register your warranty online within the first year of purchase in order to make a valid claim. Now you can register your product, upload your warranty online, never have to worry about losing your receipt again and enjoy the benefit of your 2 year warranty.

## Added Benefits

In addition to providing you with an online profile of your registered products we will also provide a host of value added benefits:

- Incentives and Competitions for registered users
- New recipes or ideas for your products
- New product developments – be the first to get the latest appliances
- Special offers on promotional items

## How to Register your Online Warranty?

### STEP1 Create your user profile:

If you haven't done so already, simply visit [www.taurusappliances.co.za](http://www.taurusappliances.co.za), click on the "Product Registration" link and follow the easy instructions. You will receive a username and password once registered. This will give you access to your user profile.



[taurusappliances.co.za](http://taurusappliances.co.za)

### STEP2 Pick a registration method:



#### DESKTOP/ LAPTOP

- Open your internet browser and visit [www.taurusappliances.co.za](http://www.taurusappliances.co.za)
- Click on the "Registration" link and login using your user name and password.
- Click on "Register your products and upload receipts" and follow the easy instructions.
- Scan and upload your receipt



#### SMART PHONE/ TABLET

- Scan the QR code above or visit [www.taurusappliances.co.za](http://www.taurusappliances.co.za)
- Click on the "Registration" link and login using your user name and password.
- Click on "Register your products and upload receipts" and follow the easy instructions.
- Scan or take a photo and upload your receipt.



#### FAX

- Fax the following to 021 931 4058
- First Name and Surname
- Contact telephone and fax number.
- Product Model number and Type.
- Traceability Code (found on the Warranty Card or on a label on the product)
- A clear and legible copy of your receipt.

## Notes:

1. The online warranty system is a safe storage facility for your receipt.
2. You will be required to register on the Taurus website. You will receive a username and password once registered. This will give you access to your profile.
3. From your profile you will be able to load products that you have purchased. In order to successfully register your warranty you will need to either scan and upload, or fax through your receipt to us.
4. All instructions on how to load your products are available

inside your profile.

5. Please note that you must check that your receipt has been uploaded correctly. Creative Housewares cannot be held responsible for faxes or files not received.

6. For assistance with registration please email: [marketing@creativehousewares.co.za](mailto:marketing@creativehousewares.co.za).

**NB:** Your 1 year extended warranty is only valid if your product is registered online within the first year after purchasing your Taurus product. Failure to register your product on-line within the first year will render the extended warranty as void.

creative housewares

National Service Centre: 086 111 5006

e-mail: [help@creativehousewares.co.za](mailto:help@creativehousewares.co.za)

[www.creativehousewares.co.za](http://www.creativehousewares.co.za)

#### Cape Town

20 Tekstiel Street, Parow, Cape Town, 7493,  
South Africa • P.O. Box 6156 Parow East, 7501,  
South Africa Tel: +27 21 931 8117  
Fax: +27 21 931 4058

#### Durban

35 Adrian Road, Windermere,  
Durban, South Africa, 4001  
Tel: +27 31 303 3465  
Fax: +27 31 303 8259

#### Johannesburg

Unit 25 & 26 San Croy Office park  
Die Agora Road, Croydon, 1619  
Tel: +27 11 392 5652  
Fax: +27 11 392 1694

# taurus



Dankie vir die aankoop van 'n Taurus produk. Taurus waarborg dat u produk deeglik geïnspekteer en getoets word voordat dit versend word en is vry van meganiese en elektriese gebreke en voldoen aan die toepaslike veiligheidstandaarde. Met elke Taurus produk wat gekoop word kry u 'n 2 jaar waarborg soos uiteengesit in die terme en voorwaardes hieronder.

## **Eerste Jaar - 1 Jaar Kleinhandelswaarborg:**

Indien defekte as gevolg van foutiewe onderdele of vakmanskap binne 12 maande onder normale huishoudelike gebruik ontwikkel, binne die 12 maande vanaf die oorspronklike datum van aankoop, neem asseblief die produk na die winkel van waar dit gekoop is vir 'n terugbetaling of vervanging.

## **Tweede Jaar - 1 Jaar Uitgebreide Waarborg**

Taurus is trots op die kwaliteit van die produk en bied dus 'n uitgebreide 12 maande waarborg bo en behalwe die 1 Jaar kleinhandelswaarborg. Indien defekte as gevolg van foutiewe materiaal of vakmanskap ontwikkel, onder normale huishoudelike gebruik, na die 12 maande tydperk en binne 24 maande vanaf die oorspronklike datum van aankoop, stuur die produk terug met posgeld betaal na Taurus vir herstel. Taurus sal die produk gratis herstel en dit direk aan u terugstuur. Taurus sal die produk vervang met 'n soortgelyke produk in dieselfde of beter toestand, as die herstel nie uitgevoer kan word vir watter rede ookal nie.

NB: Die 1 Jaar Uitgebreide waarborg is slegs geldig vir kliënte wat hul waarborg registreer het op ons webtuiste by [www.taurusappliances.co.za](http://www.taurusappliances.co.za) binne die eerste jaar nadat hulle dit aangekoop het. Sien keersy vir besonderhede en instruksies.

## **Voordat u die produk terug stuur, maak seker van die volgende:**

- U huishoudelike geleidingsok is in 'n goeie toestand, werk en aangeskakel is,
- Die geleidingsok is nie oorlaai nie (Wit uitskop skakelaar op u DB bord af is),
- U het die moeilikheid sturingsgids gelees in u instruksies vir gebruik,
- Alle bykomstighede en dele teenwoordig is.

## **Die volgende voorwaardes geld:**

1. Maak seker dat u kwitansie behoue is, dit moet aangebied word wanneer 'n eis gemaak word onder die voorwaardes van die waarborg. Dit is onmoontlik om die waarborg tydperk te bepaal sonder die bewys van aankoop, so hou dit asseblief in 'n veilige plek. (NB. U waarborg kan opgeskander word na die Taurus webtuiste vir veilige bewaring - sien keersy vir meer inligting.)
2. Indien 'n terugbetaling of omruiling van die produk nodig is moet die produk volledig wees met al die bykomstighede, onderdele en verpakking. Toebehore wat weg is sal die waarborg nietig maak.
3. Met ontvangs van u toestel, gaan dit na vir enige vervoer skade om te verseker dat dit veilig is vir gebruik. Stuur dit so gou as moontlik terug na die winkel om die beska-

digde toestel te vervang. Die waarborg is nietig indien die beskadigde produk gebruik word na die tyd, so moet asseblief nie die beskadigde produk gebruik nie.

4. U produk is ontwerp vir normale huishoudelike gebruik. Deur te versuim om die instruksies te lees en te voldoen aan die terme van gebruik, die skoonmaak en instandhouding van die produk maak u waarborg ongeldig, so lees asseblief hierdie instruksies versigtig om u veiligheid te verseker, en om die beste uit die gebruik van die produk te kry. (bv nie die verwydering van kalk skaal; water neerslag; insek besmetting, en / of verbrande produkte)
5. Enige misbruik, nalatige, onbehoorlike of toevallige beskadiging of sorg van die produk word die waarborg nietig en Creative Housewares (Pty) Ltd, sal nie aanspreeklik wees vir enige verlies of skade nie.
6. Enige poging tot herstel, of vervanging met ongemagtigde onderdele sal die waarborg nietig maak, so kontak 'n gemagtigde dienssentrum of diensagent vir enige diens of herstelwerk.
7. NB: Die waarborg op die vervangingsproduk sal by die oorspronklike datum van aankoop bly en nie van die datum wanneer dit vervang is nie.
8. Alle herstelwerk dra 'n 3 maande waarborg selfs al val dit buite die 2-jaar waarborg tydperk.
9. Taurus sal probeer om die herstelwerk te doen binne 'n redelike tyd in lyn met die industrie standaard, maar kan nie verantwoordelik gehou word of aanspreeklik wees vir enige omstandighede nie onder ons beheer nie.

## **Herstelwerk buite die waarborg tydperk**

As diens of herstelwerk benodig word buite die waarborg tydperk, is hierdie diens steeds beskikbaar, maar is alle vervoer / posgeld, onderdele en arbeidskoste op die kliënte se onkoste. Alle betaalbare herstelwerk sal skriftelike aanvaarding van die kwotasie vereis van die kliënt. So dra Taurus die groen lig ontvang sal ons onderneem om die herstel binne 'n redelike tyd en in dieselfde toestand te hou as wat die produk ontvang is. Alle herstelwerk is gewaarborg vir 3 maande vanaf die datum van die herstel.

Vir enige diens, navrae en klagtes kontak ons kliënte diens op 086 111 5006 of e-pos [help@creativehousewares.co.za](mailto:help@creativehousewares.co.za) vanaf 08h00 tot 15h00, Maandag tot Vrydag, openbare vakansiedae uitgesluit. Let asseblief ook daarop dat die maatskappy gewoonlik gesluit is vir 2 weke gedurende Kersefees en Nuwejaar.

Stuur asseblief alle produkte vir herstel met posgeld vooruit betaal aan een van die dienssentrums wat op die agterkant van hierdie bladsy verskyn.

# AANLYN WAARBORG REGISTRASIE

## Hoekom moet u die waarborg moet registreer?

Ons by Taurus is trots om premium gehalte toestelle op die mark te bring, en as 'n verbintenis tot die vlak van gehalte bied ons 'n 2 jaar waarborg (1 Jaar Kleinhandel + 1 Jaar Uitgebreide) op al ons produkte. Ons hoor dikwels dat ons kliënte hul kwitansies verloor en kan dus nie meer eis as hulle 'n probleem het nie. Om voordeel te trek van die 1 Jaar Uitgebreide waarborg sal u nodig hê om u waarborg aanlyn te registreer binne die eerste jaar van aankoop om 'n geldige eis te maak. Nou kan u die produk aanlyn registreer, laai u waarborg en hoef u nooit te bekommer dat u die kwitansie sal verloor nie en die voordeel van u 2-jaar waarborg geniet.

## Bygevoegde Voordele

Bykomend tot die verskaffing van 'n aanlyn profiel van u geregistreerde produkte bied ons ook vele ander toegevoegde waarde voordele:

- aansporings en kompetisies vir geregistreerde gebruikers
- nuwe resepte of idees vir u produkte
- nuwe produk ontwikkelings - die eerste wees om die nuutste toestelle te kry
- spesiale aanbiedings op promosie-items

## Hoe om u Aanlyn Waarborg te Registreer?

### STAP 1 Skep u gebruikersprofiel:

As u dit nie reeds gedoen het nie, besoek [www.taurusappliances.co.za](http://www.taurusappliances.co.za), klik op die "Product Registration" skakel en volg die maklike instruksies. U sal 'n gebruikersnaam en wagwoord ontvang sodra u geregistreer het. Dit sal u toegang tot u profiel gee.



[taurusappliances.co.za](http://taurusappliances.co.za)

### STAP 2 Kies 'n registrasie metode:



#### REKENAAR/ SKOOTREK- ENAAR

- Maak u internet snuffelgids oop en besoek [www.taurusappliances.co.za](http://www.taurusappliances.co.za)
- Klik op die "Registrasie" skakel en teken in met u gebruikersnaam en wagwoord.
- Klik op "Register your products" en laai kwitansies en volg die maklike instruksies.
- Skandeer en laai u strokie



#### SMART- FOON / TABLET

- Skandeer die QR-kode bo of besoek [www.taurusappliances.co.za](http://www.taurusappliances.co.za)
- Klik op die "Registration" skakel en teken aan met u verbruikersnaam en wagwoord.
- Klik op "Register your products" en laai u kwitansie en volg die maklike instruksies.
- Skandeer of neem 'n foto en laai u strokie.



#### FAKS

- Faks die volgende na 021 931 4058
- Naam en Van
- Kontak telefoon en faksnommer.
- Produk model nommer en tipe.
- Traceability Code (wat op die
- Waarborgkaart of op 'n etiket op die produk gevind kan word)
- 'n Duidelike en leesbare afskrif van u ontvangs.

## Notas:

1. Die aanlyn waarborg stelsel is 'n veilige stoor fasiliteit vir u strokies.
2. U sal gevra word om op die Taurus webtuiste te registreer. U sal 'n gebruikersnaam en wagwoord ontvang. Dit sal u toegang gee tot u profiel.
3. Van u profiel u sal in staat wees om produkte te laai wat u gekoop het. Om u waarborg suksesvol te registreer sal u nodig hê om of te skandeer en oplaai, of faks u strokie deur na ons.
4. Alle instruksies oor hoe om u produkte te laai is beskikbaar binne in u profiel.
5. Let daarop dat u moet seker maak dat u kwitansie korrek op-

gelaai is. Creative Housewares kan nie verantwoordelik gehou word vir faksse of lêers nie ontvang nie.  
6. Vir hulp met registrasie e-pos asseblief: [marketing@creativehousewares.co.za](mailto:marketing@creativehousewares.co.za).

**NB:** U 1 jaar verlengde waarborg is slegs geldig indien u produk aanlyn geregistreer is binne die eerste jaar na die aankoop van u Taurus produk. Indien u produk nie aanlyn geregistreer word binne die eerste jaar nie sal dit die verlengde waarborg nietig maak.

creative housewares  
National Service Centre: 086 111 5006  
e-mail: [help@creativehousewares.co.za](mailto:help@creativehousewares.co.za)  
[www.creativehousewares.co.za](http://www.creativehousewares.co.za)

#### Cape Town

20 Tekstiel Street, Parow, Cape Town, 7493,  
South Africa • P.O. Box 6156 Parow East, 7501,  
South Africa Tel: +27 21 931 8117  
Fax: +27 21 931 4058


#### Durban


35 Adrian Road, Windermere,  
Durban, South Africa, 4001  
Tel: +27 31 303 3465  
Fax: +27 31 303 8259



#### Johannesburg

Unit 25 & 26 San Croy Office park  
Die Agora Road, Croydon, 1619  
Tel: +27 11 392 5652  
Fax: +27 11 392 1694


creative housewares

 20 Tekstiel St, Parow, Cape Town, 7493, RSA

 P.O. Box 6156 Parow East, 7501, RSA

 +27 21 931 8117  +27 21 931 4058

Service Centre Helpline: 086 111 5006

 [www.creativehousewares.co.za](http://www.creativehousewares.co.za)