

casals 



500W Electric Blower



COMPLIES WITH
INTERNATIONAL
IEC60335
SAFETY SPECIFICATIONS



500W

2 YEAR
GUARANTEE

Model:
B 5 0 0 E

PLEASE READ ALL INSTRUCTIONS BEFORE USE

EXPLANATION FOR SYMBOLS



A Class II or double insulated electrical appliance is one which has been designed in such a way that it does not require a safety connection to electrical earth. The basic requirement is that no single failure can result in dangerous voltage becoming exposed so that it might cause an electric shock and that this is achieved without relying on an earthed metal casing. This is usually achieved at least in part by having two layers of insulating material surrounding live parts or by using reinforced insulation



Read instruction manual before operating or attempting any maintenance work.



Switch off and remove the plug from the mains before cleaning or maintenance.



DO NOT leave or use this appliance in the rain.



Wear hearing and eyes protection.

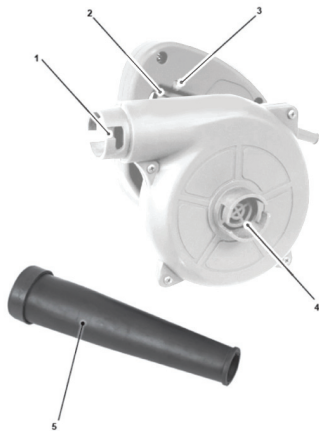


Fig. A

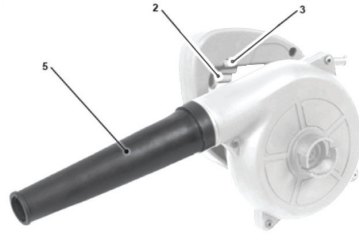


Fig. B



Fig. C

The numbers in the test below refers to the diagrams labelled Fig. A, Fig. B and Fig. C

Contents

1. Machine Information
2. Safety Instructions
3. Mounting Accessories
4. Operation
5. Service & maintenance

Machine Information

Technica Specifications

Voltage	: 230 - 240V
Frequency	: 50Hz
Power input	: 500W
No load seed	: 16000/min
Air blow rate	: 2.5m ³ /s
Weight:	: 1.5kg
Sound pressurec (Lpa)	: 86.9 + 2 dB(A)
Sound pwer (Lwa)	: 96.15 + 3 dB(A)
Vibration	: 3.5 + 1.5m/s ²

Vibration Level

The vibration emission Level stated in this Instruction Manual has been measured in accordance with a standardised test given in IEC 60335. It may be used to compare one tool with another and as a preliminary assessment of exposure to vibration when using the tool for the applications mentioned.

Contents of packing

- 1 Electric dust blower
- 1 Dust bag
- 1 Set carbon brushes
- 1 Operating instructions
- 1 Safety instructions

Check the appliance for any loose parts and accessories for any damage cause during transportation.

Product information

Fig. A to C

1. Outlet
2. On/off switch
3. Lock on button
4. Suction port
5. Nozzle
6. Dustbag
7. Carbon brush cap

Safety Instructions

Explanation of the symbols



Denotes risk of personal injury, loss of life or damage to the tool in case of non-observance of the instructions in this manual.



Indicates electrical shock hazard.



Do not expose to rain.



Wear eye protection



Remove plug from mains



Keep bystanders away



Safety Instructions

This appliance is not intended for use by persons (including children) with reduced physical, sensory or mental capabilities, or lack of experience and knowledge, unless they have been given supervision or instruction concerning use of the appliance by a person responsible for their safety.

- Children should be supervised to ensure that they do not play with the appliance.
- This tool is intended for household use only.

- Only use attachments recommended in this manual.
- Keep ventilation openings free of anything that may reduce the air flow.
- Do not use to pick up anything that is burning or smoking, such as cigarettes, matches, freshly cut metal shavings or hot ashes.
- Do not use to pick up flammable or combustible liquids such as gasoline or use in areas where they may be present.
- Do not use without dust container or and filter in place.
- Do not use outdoors or on wet surfaces.
- Use extra care when using on stairs.
- Always use protective goggles, a cap and mask when using the blower.
- Never point the nozzle at anyone in the vicinity when using the blower.
- Always use the dust bag when collecting dust, chips and the like.
- Never operate the appliance while people, especially children, or pets are nearby.
- Do not wear loose clothing or jewellery that can be drawn into the air inlet.
- Keep long hair away from the air inlets.
- Before using, check the supply and extension cord for signs of damage and aging.
- Do not use the appliance if the cord is damaged or worn.
- If a cord becomes damaged during use, disconnect the supply cord from the mains immediately. **DO NOT TOUCH THE CORD BEFORE DISCONNECTING THE SUPPLY.**
- Do not carry the appliance by the cable.
- Disconnect the appliance from the mains supply whenever you leave the machine; before clearing a blockage; before checking, cleaning or working on the appliance; if the appliance starts to vibrate abnormally.
- Keep all nuts, bolts and screws tight to be sure the appliance is in safe working condition.
- Check the dust bag frequently for wear or deterioration.
- Replace worn or damaged parts.
- Use only genuine replacement parts and accessories
- Store the appliance only in a dry place.

Electrical safety

When using electric machines always observe the safety regulations applicable in your country to reduce the risk of fire, electric shock and personal injury. Read the following safety instructions and also the enclosed safety instructions. Keep these instructions in a safe place!



Always check that the power supply corresponds to the voltage on the rating plate.



The machine is double insulated in accordance with IEC60335; therefore no earth wire is required.

Replacing cables or plugs

If the replacement of the supply cord is necessary, this has to be done by the manufacturer or his agent in order to avoid a safety hazard.

Using extension cables

Only use an approved extension cable suitable for the power input of the machine. The minimum conductor size is 1.5 mm². When using a cable reel always unwind the reel completely.

3 Mounting accessories

Dust blower function

Fig. A + B

- Attach the nozzle (5) to the outlet. (1)
- Turn the nozzle (5) clockwise to lock it in place.

Dust suction function

Fig. A + C

- Attach the nozzle (5) to the suction port. (4)
- Attach the dustbag (6) to the outlet. (1)

After use, always empty the contents of the dust bag in a dust bin. Open the zip to release the dust from the dust bag.

4. Operation

Starting and stopping the machine.

Fig. A

The On/Off switch

- Switch the machine on by pressing the on/off switch (2).
- Release the on/off switch (2) will turn the machine off.

Switch-lock

- Lock the On/Off switch by pressing the on/off switch (2) and then pressing the lock on button (3).
- Release the switch-lock by pressing the on/off switch (1) shortly.

5. Service & maintenance



Disconnect the machine from the mains, if you must carry out cleaning or maintenance work on the machine. Risk of electric shock!

The machine has been designed to work over a long period without problems and with minimum maintenance requirements. You can extend the service life of your machine by cleaning it regularly and treating it professionally.

Replacing the carbon brushes - Fig. C

Remove and check the carbon brushes regularly. They need to be replaced when they are worn down to about 6mm or less. Keep the brushes clean and free to slip in the holders. Always replace both carbon brushes at the same time.

- Unscrew the carbon brush cap. (7)
- Remove and replace the carbon brush.
- Screw the carbon brush holder (7) back in position.

Cleaning

Clean the machine housing regularly with a soft cloth, preferably after each use. Remove persistent dirt with a soft cloth, dampened with soap water. Do not use solvents, such as gasoline, alcohol, ammonia, etc. Such materials damage the plastic parts.

Lubricating

This machine does not need additional lubrication.

Environment

The machine is supplied in a robust packaging, in order to prevent transport damages. The packaging consists largely of recyclable material.



2 YEAR GUARANTEE

Casals guarantees that this product has been thoroughly inspected and tested before being dispatched and is free from mechanical and electrical defects and complies with the applicable safety standards. However, should defects due to faulty material or workmanship develop, under normal domestic use, within 6 months from the date of purchase please return the product to the store from where it was purchased for a full refund or replacement.

The following conditions apply:

1. Please ensure you retain your receipt as this must be presented when making a claim under the terms of the guarantee. It is impossible to determine the guarantee period without proof of purchase, so please keep this in a safe place.
2. If a refund or exchange is required the product must be complete with all accessories, parts and packaging.
3. Missing parts will render the guarantee void.
4. Upon receipt of your appliance check it for any transport damage to ensure it is safe for use. Return it to the store as soon as possible for exchange if damaged. The guarantee is void if products are damaged after use, so please do not use the damaged product.
5. Your product is designed for normal domestic household use. Failure to read and comply with the instructions for use, cleaning and maintenance will render your guarantee void, so please read these instructions carefully to ensure your safety, and get the most effective use from the product.
6. **Any abuse, negligent, improper use will render the guarantee void and Creative Housewares (Pty) Ltd will not be liable for any loss or damage.**
7. This Guarantee will not apply if this tool is damaged by accident or from normal wear and tear.
8. Any attempted repair, or replacement of unauthorised parts will render the guarantee void, so please contact an authorised service centre or agent for any service or repair requirements.
9. **Accessories such as bits, blades, sanding disc, cutting lines, etc are excluded from this guarantee.**
10. **Normal consumables parts, such as carbon brushes, bearings, chucks, cord assembly's, spark plugs, recoil pulleys and bump head assembly's are specifically excluded from this guarantee.**

Extended 24 Month Limited Guarantee

- Casals takes pride in their product quality and therefore offer an extended 24 month limited guarantee from the original date of purchase to offer the consumer peace of mind on their purchase.
- Should defects due to faulty material or workmanship develop, under normal domestic use, within 24 months from the original date of purchase, please return the product to the store from where it was purchased for repair free of charge.
- Casals will however replace a product, if the cost of the repair is not commercially viable or if their ability to conduct repair effectively cannot be guaranteed.
- **NB:** The guarantee on replaced products will be from the original date of purchase.
- All repairs carry a 3 month guarantee even if this falls outside of the 2 year guarantee period. Casals will attempt to conduct repairs within reasonable industry standards but cannot be held responsible or liable for any circumstances not under their control.

Before returning your product, check for the following:

1. Your household mains supply socket is working and switched on.
2. The mains supply circuit is not overloaded (White trip switch on your DB board is off).
3. You have read the trouble shooting guide in your Instructions for Use.
4. All accessories and parts are present.

If service or repair becomes necessary outside the guarantee period, this service is still available however all transport/postage, spares and labour costs will be paid by the consumer. All chargeable repairs will require the consumers' approval in writing once the quote is accepted. Once the go-ahead has been received Casals will undertake to conduct the repair within a reasonable time and maintain the condition of the product as received.

For any assistance, service, queries and complaints please contact our Customer Care on 086 111 5006 or e-mail help@creativehousewares.co.za.

Be on the look-out for these Casals products at your local outlet:



CD4800RE



CD1200RE



ID500RE



ID710RE



BS76-710



OS150



PL82-710



HAG2000



AG115-710



AG230-2000



JS55



R1200E



CS184L

creative housewares

🏠 20 Tekstiel Street, Parow, Cape Town, 7493, South Africa

✉ P.O. Box 6156 Parow East, 7501, South Africa

☎ +27 21 931 8117 📠 +27 21 931 4058

Service Centre Helpline: 086 111 5006

🌐 www.creativehousewares.co.za