



# Ace



# PRO STYLER T2 STRAIGHTENER



complies with  
INTERNATIONAL  
IEC60335  
SAFETY SPECIFICATIONS



35W

1 YEAR  
GUARANTEE

Model: HSTC35WA,  
HSTC35RA, HSTC350A,  
HSTC35BA, HSTC35GA





### Instruction for use

- This appliance is not intended for use by persons (including children) with reduced physical, sensory or mental capabilities, or lack of experience and knowledge, unless they have been given supervision or instruction concerning use of the appliance by a person responsible for their safety”
- Children should be supervised to ensure that they do not play with the appliance
- ⚠ Do not use the appliance near bathtubs, showers, basins or other vessels containing water and any other liquids. If the supply cord is damaged, it must be replaced by the manufacturer, its service agent or similarly qualified persons in order to avoid a hazard.

### Safety instructions when connecting the appliance

- This appliance complies with the recognized rules of the technology and the pertinent safety regulations for electrical appliance.
- The Voltage of the power source must be same as specified on the rating plate!
- Connect the appliance only to AC power. Do not pull the cable over sharp edges, clamp it into place or allow it to hang down! Keep the cable away from hot and damp areas!
- Before use, check that the appliance functions properly. The appliance should not be used if:
  - The connecting cable is damaged
  - The appliance shows noticeable damage
  - The appliance has been dropped
- Do not wind the main cable around the appliance to avoid damaging the appliance.
- The main cable must not come into contact with hot appliance parts and should never run between the straightening plates!
- Only insert the main cable plug to power supply when the appliance is switched off!

### Safety instructions when operating the appliance

- The appliance must not come into contact with flammable material. It must also not be used near flammable material because the straightener plates reach a temperature of approx. 210°C!
- Never cover the straightening plates with any object.
- The appliance must never be switched on when the plates are clamped together. Ensure that the appliance is open
- Remove the plug from the power supply:
  - If the appliance does not function properly
  - Before cleaning
  - After every use
- Do not pull the main cable and/or carry the appliance by means using the cable
- Never use the appliance in the bathroom.

### Risk of burns from the straightening plates and hot appliance parts!

Never grasp the appliance by or near the

straightening plates when the appliance is on. The straightening plates can cause burns. Avoid contact with the skin and eyes. Never move the appliance when hot!

### Risk of electric shock!

- Never use the appliance with wet hands, in the bath or shower or over a filled washbasin. If the appliance falls into the water, remove the main cable plug immediately. After use, or if pausing for a significant length of time, unplug it and let the appliance cool down.
- Protect the appliance from moisture. Never put it into the dishwasher or immerse in water or any other liquids.

### Risk of burns with hair spray!

Hair spray may cause burns when the substance comes into contact with the hot straightening plates.

Safety instructions for cleaning and maintenance

- Always disconnect the appliance from the power supply and allow the appliance to cool down before cleaning and maintenance, or if faults occur during operation!
- Do not use the main cable to pull the plug nor remove the plug from the socket with wet hands!

### Technical Data:

Type and ratings: 110-240Vac~/35W/50/60Hz

### Use instruction

#### Switching on the appliance

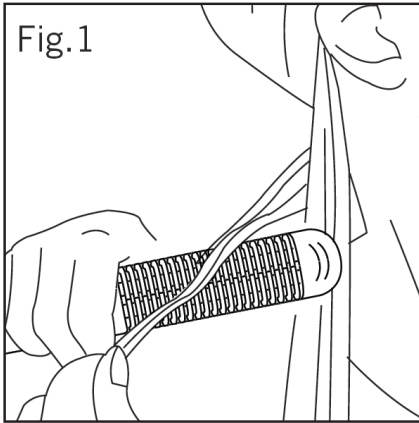
- Connect the appliance into the power supply and switch on the appliance using the ON/OFF button.
- The pilot indicator light will turn on.
- Allow the appliance to reach maximum temperature before use, in about 60 seconds.

#### Straightening hair

- Hold the appliance at the handle, always at a safe distance from skin and eyes. Use a mirror.
- Comb the hair well before straightening, ensuring there are no tangles or knots.
- Part your hair into approx. 4 cm strands.
- Hold the appliance with one hand, while the other hand is holding the strand of hair.
- Place the strand of hair in between the plates, starting from the roots. Hold the plates tight by pressing the handle together.
- Hold for 2-3 seconds and slide the strand from the head towards the tip ends of the hair. DO NOT hold the hair between the plates for more than 2-3 seconds.
- Repeat until your hair is as straight as you desire.
- Style the next strand, ensuring that the next strand overlap with the previous strand.

After finishing styling, let your hair cool down and then comb it through.





#### **Curling :**

- Hold the appliance at the handle, always at a safe distance from skin and eyes. Use a mirror.
- Comb the hair well before curling, ensuring there are no tangles or knots
- Part your hair into approximately 4 cm strands.
- Place the strand of hair in between the straightener plates.
- Begin from the root, rolling the hair around the appliance. Keeping a vertical position.
- As you roll towards the end, release slowly the curled section of the hair strand while using one hand to continuously roll the hair until you get to the end tips.


#### **Switching off the appliance**

Switch off the appliance using the power switch.

#### **Repair and Maintenance**

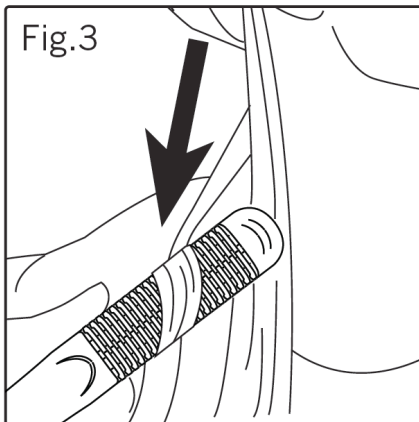
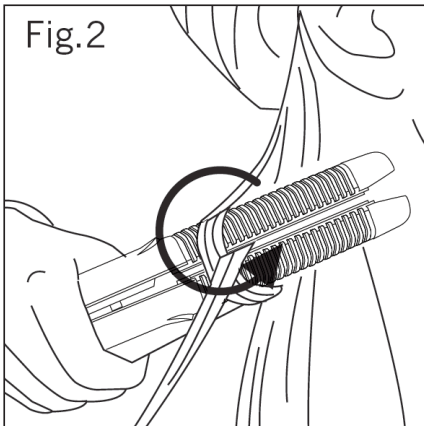
This appliance does not contain any user serviceable parts. Do not try to repair the appliance yourself. Always take it to the manufacture, its service agent or similarly qualified personnel.

#### **Environmental protection**

 Waste electrical products should not be disposed of with household waste. Please recycle where facilities exist. Check with your Local Authority or retailer for recycling advice.

#### **NOTICE**

This product has technology that lets it reach the selected temperature in less than a minute. It is therefore unnecessary to leave the unit on continuously. Consequently, to ensure a long life and to limit its energy consumption, we recommend turning the unit off when it is not in use.





# Ace

Ace guarantees that this product has been thoroughly inspected and tested before being dispatched and is free from mechanical and electrical defects and complies with the applicable safety standards. However, should defects due to faulty material or workmanship develop, under normal use, within 6 months from the date of purchase please return the product to the store from where it was purchased for a full refund or replacement.

Ace offer an extended 12 month limited guarantee from the date of purchase to offer the consumer peace of mind on their purchase. Should defects due to faulty material or workmanship develop, under normal use, within 12 months from the date of purchase, please return the product to the store from where it was purchased for replacement.

The following conditions apply:

Before returning your product, check for the following:

- 1) Please ensure you retain your receipt as this must be presented when making a claim under the terms of the guarantee. It is impossible to determine the guarantee period without proof of purchase, so please keep this in a safe place.
- 2) If a refund or exchange is required the product must be complete with all accessories, parts and packaging. Missing parts will render the guarantee void.
- 3) Upon receipt of your appliance check it for any transport damage to ensure it is safe for use. Return it to the store as soon as possible for exchange if damaged. The guarantee is void if products are damaged after use, so please do not use the damaged product.
- 4) Failure to read and comply with the instructions for use, cleaning and maintenance will render your guarantee void, so please read these instructions carefully to ensure your safety, and get the most effective use from the product. (e.g. lime scale; water deposits; and/or insect infestation)
- 5) Any abuse, negligent, improper or accidental use or care will render the guarantee void and Creative Housewares (Pty) Ltd will not be liable for any loss or damage.
- 6) Any attempted repair, or replacement of unauthorised parts will render the guarantee void, so please contact an authorised service centre or agent for any service or repair requirements.

1. Your mains supply socket is working and switched on.
2. The mains supply circuit is not overloaded (White trip switch on your DB board is off).
3. You have read the trouble shooting guide in your Instructions for Use.
4. All accessories and parts are present.

If service or repair becomes necessary outside the guarantee period, this service is still available however all transport/postage, spares and labour costs will be paid by the consumer. All chargeable repairs will require the consumers' approval in writing once the quote is accepted. Once the go-ahead has been received Ace will undertake to conduct the repair within a reasonable time and maintain the condition of the product as received.

All repairs carry a 3 month guarantee. Ace will attempt to conduct repairs within reasonable industry standards but cannot be held responsible or liable for any circumstances not under their direct control.

Extended 12 Month Limited Guarantee

**National Service Centre: 086 111 5006**

**e-mail: [help@creativehousewares.co.za](mailto:help@creativehousewares.co.za)**

**creative housewares**

**web: [www.creativehousewares.co.za](http://www.creativehousewares.co.za)**

## Cape Town

20 Tekstiel Street, Parow, Cape Town, 7493, South Africa  
P.O. Box 6156 Parow East, 7501, South Africa  
Tel: +27 21 931 8117 Fax: +27 21 931 4058

## Johannesburg

9 Hamburg Road, Aeroport, Spartan,  
Johannesburg, South Africa  
Tel: +27 11 392 5652 Fax: 086 567 9222

**1 year guarantee**





# Ace

creative housewares

🏠 20 Tekstiel Street, Parow, Cape Town, 7493, South Africa

✉ P.O. Box 6156 Parow East, 7501, South Africa

☎ +27 21 931 8117    📠 +27 21 931 4058

Service Centre Helpline: 086 111 5006

🌐 [www.creativehousewares.co.za](http://www.creativehousewares.co.za)

