

casals 



1600W Lawnmower



COMPLIES WITH
INTERNATIONAL
IEC60335
SAFETY SPECIFICATIONS



1600W

2 YEAR
WARRANTY

Model:
LM1600EA

PLEASE READ ALL INSTRUCTIONS BEFORE USE

IMPORTANT:

Thank you for purchasing a Casals Electric Lawn mower (hereinafter referred to as the "Power tool"). This manual will assist you in operating and maintaining your power tool. This manual is the latest version. With the continuous improvement and upgrading of this product, the manufacturer reserves the right to modify this manual without notice. The manufacturer shall assume no liability for incorrect information contained in this manual. This manual is an integral part of the power tool. When the power tool is transferred to others, this manual should be handed over to the new owner. The users should pay special attention to these instructions.

IMPORTANT:

The range of CASALS Outdoor Power tools is safe and reliable, but incorrect use of these products may cause personal injury and or damage to your machine. Please read this manual thoroughly before attempting to operate or assemble as this product is required to operate strictly in accordance with this manual.

WARNING

Read and understand all instructions. Save these instructions. Failure to follow all instructions listed below may result in electric shock, fire and or serious injury. The term 'power tool' in all of the warnings below refers to your mains-operated (corded) power tool.

KNOW YOUR LAWN MOWER

Read this manual carefully, observing the recommended safety instructions before, during and after using your lawn mower. Following these simple instructions will also maintain your lawn mower in good working order. Familiarize yourself with the controls

on your mower before attempting to operate it, but above all, be sure you know how to stop your mower in an emergency. Retain this user manual and all other literature with your mower for future reference.

SYMBOLS MARKED ON THE PRODUCT



Read this instruction book carefully before using the lawn mower and keep it in a safe place for future reference.



Keep bystanders away.



Beware of sharp blades. Blades continue to rotate after the motor is switched off.



Remove the plug from the machine before maintenance or if cord damaged.



Keep the supply flexible cord away from the cutting blades.



CAUTION! Unusable power tools do not belong with domestic waste. They must be taken to a communal collecting point for environmentally friendly disposal in accordance with local regulations.



Noise level marking
Your tool noise is not more than 96dB.

DOUBLE INSULATED



Your mower is double insulated. This means that all external parts are electrically isolated from the power supply. This is achieved by placing an extra insulation barrier between the electrical and mechanical parts.

Parts Discription:

1. Motor Assembly
2. Lower Handle
3. Upper Handle
4. Cable clip
5. Securing knob and bolt
6. Height adjustment lever
7. Safety button
8. Trigger ON/OFF switch
9. Grass box
10. Wheel
11. Cable Retaining Hook



Intended Use and Reasonably Foreseeable Misuse:

The Lawn mower is intended to be used only for mowing domestic lawns. The Lawn mower has been designed for use only in private gardens and is not suitable for use in public grounds, parks, sports fields or for agricultural or forestry purposes. Only mow the lawn when the grass is relatively dry. Any other use of the lawn mower is consid-

ered inappropriate use. The manufacturer shall not be liable for any damage or injury resulting from misuse.

Only the manufacturer's approved replacement parts and blades are to be used on the machine. Structural modifications or use of components not approved by the manufacturer will void the warranty and absolve the manufacturer of any liability.

Even with the intended use of the lawn mower there is always a residual risk, which cannot be eliminated.

According to the type and construction of the lawn mower the following potential hazards might apply:

- Ejection of stones etc. from the cutting area (Cutting / injection hazards)
- Injury from the exposed blade during maintenance (Cutting hazards)
- Electric shock on contact with non-insulated electric components,
- Loss of hearing if suitable ear protection is not worn

Warning: The actual level of vibration while using the lawn mower may differ from the level specified in this manual by the manufacturer. The following factors may affect actual level of vibration:

- correct use of the lawn mower
- Proper maintenance of the lawn mower
- selected height of cut
- Sharpness and balance of blade

Make a work plan so that your exposure to vibration can be limited.

If you experience an unpleasant sensation or skin discoloration while using the lawn mower, immediately stop working. Take sufficient work breaks to prevent hand-arm vibration syndrome.

Maintain the machine in accordance with the instructions in the manual.

Do not use of the lawn mower at temperatures below 10 °C

1. Training

- Read the instructions carefully. Be familiar with the controls and the correct use of the machine.
- Never allow children or people unfamiliar with these instructions to use the machine. Local regulations can restrict the age of the operator.
- Never operate the machine while people, especially children, or pets are nearby.
- Keep in mind that the operator or user is responsible for accidents or hazards occurring to other people or their property.

2. Preparation

- While operating the machine always wear substantial footwear and long trousers. Do not operate the machine when barefoot or wearing open sandals. Avoid wearing clothing that is loose fitting or that has hanging cords or ties.
- Thoroughly inspect the area where the machine is to be used and remove all objects which can be thrown by the machine.
- Before using, always visually inspect the machine to see that the blade, blade bolt and the blade assembly are not worn or damaged. Replace worn or damaged components in sets to preserve balance. Replace damaged or unreadable labels.
- Before use check the supply and extension cord for signs of damage or aging. If the cord becomes damaged during use, disconnect the cord from the supply immediately.

DO NOT TOUCH THE CORD BEFORE DISCONNECTING THE SUPPLY.

Do not use the machine if the cord is damaged or worn.

3. Operation

- Operate the machine only in daylight or in good artificial light.
- Avoid operating the lawn mower in wet grass.

- Always be sure of your footing on slopes.
 - Walk, never run.
 - Mow across the face of slopes, never up and down.
 - Exercise extreme caution when changing direction on slopes.
 - Do not mow excessively steep slopes.
 - Use extreme caution when reversing or pulling the appliance toward you.
 - Stop the blade(s) if the machine has to be tilted for transportation, when crossing surfaces other than grass, and when transporting the machine to and from the area to be used.
 - Never operate the machine with defective guards or shields, or without safety devices, for example deflectors and/or the grass collector, in place.
 - Switch on the motor carefully according to instructions and with feet well away from the blade(s).
 - Do not tilt the machine when switching on the motor.
 - Do not start the machine when standing in front of the discharge opening.
 - Do not put hands or feet near or under rotating parts.
- Keep clear of the discharge opening at all times.
- Ensure that the lawn mower is switched off when moving from one work area to another.
 - Stop the machine, and remove the plug from the socket. Make sure that all moving parts have come to a complete stop:
 - Whenever you leave the machine,
 - Before clearing blockage or unclogging chute,
 - Before checking, cleaning or working on the machine,
 - After striking a foreign object. Inspect the machine for damage and make repairs before restarting and operating the machine,
 - If the appliance starts to vibrate abnormally

(Check immediately).

- If the machine starts to vibrate abnormally:
- Immediately inspect for damage,
- replace or repair any damaged parts,
- check for and tighten any loose parts.

4. Maintenance and storage

- Keep all nuts, bolts and screws tight to ensure the machine is in safe working condition.
- Check the grass collector frequently for wear or deterioration.
- During adjustment of the machine be careful to prevent trapping your fingers between moving blades and fixed parts of the machine.
- Always allow the machine to cool down before storing.
- When servicing the blades be aware that, even though the power source is switched off, the blades can still be moved.
- Replace worn or damaged parts for safety. Use only genuine replacement parts and accessories.

WARNING

- This appliance is not intended for use by persons (including children) with reduced physical, sensory or mental capabilities, or lack of experience or knowledge, unless they have been given supervision or instruction concerning use of the appliance by a person responsible for their safety. Children should be supervised to ensure that they do not play with the appliance.
- This Lawn Mower is designed for the cutting of domestic grass and lawns.
- The Lawn Mower must be fully assembled before connecting to the power supply.
- When using wear robust footwear and suitable outdoor clothing.
- Never put your hands into the underside of the cutting area when the Lawn Mower is

turned on.

- Keep the flexible supply power cable (cord) away from the blades.
- Before use check the supply power cable (cord) for signs of damage or ageing.
- Never operate the appliance with damaged guards or without the guards in place.
- Danger! The cutting blade rotates for some time after the motor has been turned off.
- Never start the Lawn Mower when it is lying on its side.
- When operating always adopt a safe stance and hold the Lawn Mower firmly, away from your body keeping hands and feet safely away from the cutting head.
- Thoroughly inspect the area to be mown, remove all stones, sticks, string, wire and any other objects that could hinder your mowing.
- Always be aware of your footing when mowing on slopes.
- Mow across the face of slopes, never up and down.
- Use extreme caution when changing direction on slopes. Be aware of the cable position.
- Do not mow excessively steep slopes where keeping a good footing is difficult.
- Use extreme caution when reversing or pulling the mower towards you.
- Make sure that the power cable is always behind the Lawn Mower and away from the cutting path of the mower.
- Do not use the Lawn Mower in the rain; never leave the mower out in the rain.
- Avoid mowing wet grass if possible.
- Never pick up or carry the mower while it is switched on.
- Always turn off the mower and wait for the cutting blades to stop rotating before moving from one area to another.
- Always turn off and disconnect from the power supply before attempting any clean-

ing or maintenance work.

- Make sure that the ventilation openings are kept clear of grass cuttings and debris.
- Before using the Lawn Mower and after any impact, check for signs of wear or damage.
- After use disconnect the power supply, clean off the grass cuttings from the top and underside of the mower head.
- Only use the manufacturer recommended replacement parts and accessories.
- Inspect and maintain the lawnmower regularly and have any repairs required done by an authorized repairer.
- Store in a safe secure place out of the reach of children.

WARNING: Wait until all moving parts are at a complete standstill before touching them. The cutting blade continues to rotate after the Lawn Mower is switched off, a rotating blade can cause injury.

Electrical Safety

- It is strongly recommended that mains power be supplied to the Lawn Mower through a residual current device (RCD) having a rated residual current rating not exceeding 30mA.
- Where necessary, use a suitable waterproof extension lead no longer than 25 meters.
- Plugs and connectors must be protected from getting wet.
- Turn off and remove the plug from the socket when leaving the Lawn Mower or when attempting to clear any debris or blockage.
- Should the supply cable become damaged in any way turn off the mains power supply at the socket and immediately unplug the cable. When the cable is totally disconnected it can be removed by qualified personnel.
- Do not use in wet conditions. Avoid all

contact with water.

- Power tool plugs must match the outlet. Never modify the plug in any way.
- Avoid body contact with earthed or grounded surfaces such as pipes, radiators, ranges and refrigerators. There is an increased risk of electric shock if your body is earthed or grounded.
- Do not abuse the power cable (cord). Never use the power cable for carrying, pulling or unplugging the lawn mower. Keep the power cable away from heat, oil, sharp edges or moving parts. Damaged or entangled power cables increase the risk of electric shock.
- When operating a power tool outdoors, use an outdoor extension power cable suitable for outdoor use. Use of a power cable suitable for outdoor use reduces the risk of electric shock.

Work Area

- Do not operate lawn mower in explosive atmospheres, such as in the presence of flammable liquids, gases, or dust. Power tools create sparks which may ignite the dust or fumes.
- Keep children and bystanders away while operating a lawn mower. Distractions can cause you to lose control.

Personal Safety

- Stay alert, watch what you are doing and use common sense when operating a power tool. Do not use a power tool while you are tired or under the influence of drugs, alcohol, or medication. A moment of inattention while operating power tools may result in serious personal injury.
- Use safety equipment. Always wear eye protection. Safety equipment such as a dust mask, non-skid safety shoes, hard hat, or hearing protection used for appropriate conditions will reduce

personal injuries.

- Avoid accidental starting. Ensure the switch is in the off-position before plugging in.
- Carrying power tools with your finger on the switch or plugging in power tools that have the switch on invites accidents.
- Remove any adjusting key or wrench before turning the tool on. A wrench or a key that is left attached to a rotating part of the power tool may result in personal injury.
- Do not overreach. Keep proper footing and balance at all times. This enables better control of the power tool in unexpected situations.
- Dress properly. Do not wear loose clothing or jewellery. Keep your hair, clothing and gloves away from moving parts. Loose clothes, jewellery or long hair can be caught in moving parts.

Power Tool Use and Care

- Do not force the power tool. Use the correct power tool for your application. The correct power tool will do the job better and safer at the rate for which it was designed.
- Do not use the power tool if the switch does not turn it on and off. Any power tool that cannot be controlled with the switch is dangerous and must be repaired.
- Disconnect the plug from the power source before making any adjustments, changing accessories, or storing power tools. Such preventive safety measure reduces the risk of starting the power tool accidentally.
- Maintain power tools. Check for misalignment or binding of moving parts, breakage of parts and any other condition that may affect the power tool's operation. If damaged, have the power tool repaired before use. Many accidents are caused by poorly maintained power tools.
- Keep cutting tools sharp and clean. Properly maintained cutting tools with sharp cutting edges are less likely to bind and are

easier to control.

- Use the power tool, accessories and tool bits etc., in accordance with these instructions and in the manner intended for the particular type of power tool, taking into account the working conditions and the work to be performed. Use of the power tool for operations different from intended could result in a hazardous situation.

Service

Have your power tool serviced by a qualified repair technician using only identical replacement parts. This will ensure that the safety of the power tool is maintained.

Assembly

Assembly of the Lower Handle

To assemble the lower handles proceeds as follows:

- Insert the Lower Handle 2 directly into the locating holes on each side of the Motor Assembly 1.



Assembly of the Upper Handle 3 and Cable clip 6

To assemble the Upper Handle proceeds as follows:

- Position the Upper Handle 3 over the lower Handle 2 and align the holes. Push through the two Securing bolts 5. Screw on the Securing knobs 5 and hand tighten.
- The Securing knob and bolt 5 should be

hand tightened only.

Never use a spanner or any other tool to tighten them.



Assembly of the Grass box 9.

To assemble the grass box 9 proceed as follows:

- first, you need align the upper and lower grass box, and combine them, then you turn on the machine rear cover, align the hook on the 2 sides of back machine with the grass box, put the grass box in the 2 hooks and then loose the machine rear cover.



All item numbers in bold refer to the illustration on page 10.

Using your Lawn Mower

Connecting your Lawn Mower

Make sure you use extension lead suitable for outdoor use (H05VV-F 2X1.0mm²) fitted to the power supply via leakage-protective system (RCD).

Connect the lawn mower firstly to the extension lead

and then connect to the power supply.

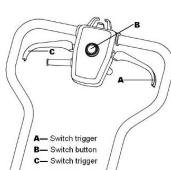
- Make sure that the supply cable to the Switch Box

7 is fitted to the cable restraint as shown below.

Create a small loop from the cable, push the

loop

through the slot of the cable retaining hook 11, place the loop over the hook, then pull the cable.

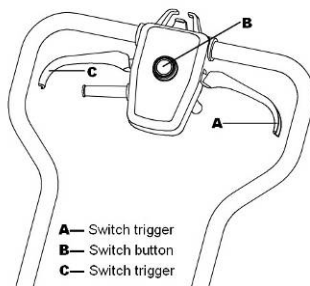


Starting and Stopping your Lawn Mower

To switch the Lawn Mower on proceed as follows:

- Press and hold in the safety Lock-Off Button located on the Switch Box 7.
- Hold in the Safety Lock-Off Button and pull the Switch Lever upwards towards the handle and hold in this position.
- The motor will now start.
- Release the Safety Lock-off Button.
- To stop the mower simply release the Switch Lever and the mower will stop.

Warning: The blades will continue to rotate for some time after the mower has been switched off. Make sure that the blades have come to complete stop and that you have disconnected the mower from the power supply before carrying out any maintenance.



Height Adjustment

For height adjustment proceeds as follows:

Warning: Stop, release switch lever and wait until the motor stops. The blades continues to rotate for a few seconds after the machine is switch off, a rotating blade can cause injury.

For the first cut of the season, a high cutting adjustment should be selected.

This machine can be set to five height of cut.
I=25mm II=35mm III=45mm IV=55mm
V=65mm

- Pull Height adjustment lever to the broadside.
- Push the adjustment lever to the front or back.
- When the adjustment lever is in the front, it is at the highest setting, when in the back, the height is the lowest.

Note: For long grass, start mowing with the highest setting and then gradually reduce the height of cut.



Warning: When mowing, do not allow the motor to labor, particularly in heavy conditions.

When the motor labors the revolutions of the motor will drop and you will hear a change in the motor sound. When this occurs stop mowing, release the switch lever and raise the height of cut. Failure to do so could damage the machine.

NOTE: The motor is protected by a safety cut-out switch which is activated when the blade becomes jammed or if the motor is overloaded. When cut-out occurs, stop

mowing and disconnect the lawn mower from the power supply. Clear any obstruction and wait for a few minutes for the safety cut out switch to reset before continuing to use the mower. If the mower cuts out again increase the height of cut to reduce the load on the motor.

NOTE: The temperature of the motor will rise quickly,

if the lawn mower frequently jams. If the motor overheats, the safety cut out switch will operate and will cut off the power. If this occurs, you will need to disconnect the lawn mower from the power supply and wait for it to cool down completely. You will need to wait for approximately 1 hour before you can start using the mower again.

Blade Replacement

- Switch off the lawnmower and disconnect from the mains supply.

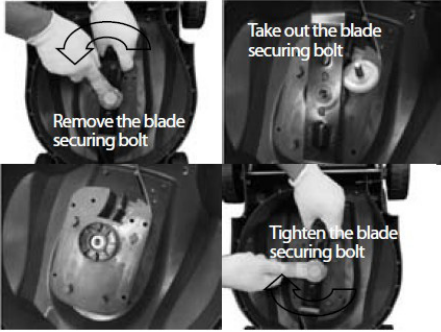
- Before replacing the blade it is advisable to thoroughly clean the underside of the machine.

- Always wear work gloves when replacing the blade. Note which way the blade is fitted. Hold the blade firmly with one hand and using the spanner to remove the blade securing bolt anticlockwise.

Remove the blade and thoroughly clean the area around the shaft.

- To attach the new blade (QT3041 400mm), align the blade onto the drive shaft ensuring that the mark on the blade is on the outside and the two studs on the back of the fan are located into the corresponding two holes in the blade. Tighten blade securing bolt clockwise, do not over tighten.

Check to ensure the blade is located correctly before using the lawnmower.



The machine leaves ragged finish or motor labors

- The height of cut is low, increase the height of cut.
- Cutting blade blunt, replace new blade.

Excessive vibration/noise

- The blade bolt is loose, tighten blade bolt.
- Cutting blade damaged, replace new blade.

Grass box:

- The lawnmower is fitted with a grass box. To attach the grass box, raise the flap on the mower body, align the mounting holes on the grass box with the bulges on the mower body and press to hear a click. To remove the grass box, raise the flap on top of the grass box, lift the grass box upwards to detach grass box from mower body.



Model Number:	LM1600EA
Voltage	230-240V~ 50Hz
Power Input:	1600W
Speed:	3200/min
Cutting Width:	400mm
Cutting height:	25/35/45/55/65
LpA: (Sound Pressure Level)	76.5dB K=3dB
LwA: (Sound Power Level)	96dB
Grass box Capacity:	40L

Eliminating Faults

The machine fails to operate

- Check the power, and turn the power on
- Check the plug, replace the blown fuse.
- If the overheat protection has activated, allow the machine to cool down and increase the height of cut before carrying on

Environmental protection



Do not dispose of the machine, accessories and packaging simply in the rubbish, but rather take them to an environmentally friendly recycling station. This small effort is good for our environment.



2 YEAR GUARANTEE

Casals guarantees that this product has been thoroughly inspected and tested before being dispatched and is free from mechanical and electrical defects and complies with the applicable safety standards. However, should defects due to faulty material or workmanship develop, under normal domestic use, within 6 months from the date of purchase please return the product to the store from where it was purchased for a full refund or replacement.

The following conditions apply:

1. Please ensure you retain your receipt as this must be presented when making a claim under the terms of the guarantee. It is impossible to determine the guarantee period without proof of purchase, so please keep this in a safe place.
2. If a refund or exchange is required the product must be complete with all accessories, parts and packaging.
3. Missing parts will render the guarantee void.
4. Upon receipt of your appliance check it for any transport damage to ensure it is safe for use. Return it to the store as soon as possible for exchange if damaged. The guarantee is void if products are damaged after use, so please do not use the damaged product.
5. Your product is designed for normal domestic household use. Failure to read and comply with the instructions for use, cleaning and maintenance will render your guarantee void, so please read these instructions carefully to ensure your safety, and get the most effective use from the product.
6. **Any abuse, negligent, improper use will render the guarantee void and Creative Housewares (Pty) Ltd will not be liable for any loss or damage.**
7. This Guarantee will not apply if this tool is damaged by accident or from normal wear and tear.
8. Any attempted repair, or replacement of unauthorised parts will render the guarantee void, so please contact an authorised service centre or agent for any service or repair requirements.
9. **Accessories such as bits, blades, sanding disc, cutting lines, etc are excluded from this guarantee.**
10. **Normal consumables parts, such as carbon brushes, bearings, chucks, cord assembly's, spark plugs, recoil pulleys and bump head assembly's are specifically excluded from this guarantee.**

Extended 24 Month Limited Guarantee

- Casals takes pride in their product quality and therefore offer an extended 24 month limited guarantee from the original date of purchase to offer the consumer peace of mind on their purchase.
- Should defects due to faulty material or workmanship develop, under normal domestic use, within 24 months from the original date of purchase, please return the product to the store from where it was purchased for repair free of charge.
- Casals will however replace a product, if the cost of the repair is not commercially viable or if their ability to conduct repair effectively cannot be guaranteed.
- **NB:** The guarantee on replaced products will be from the original date of purchase.
- All repairs carry a 3 month guarantee even if this falls outside of the 2 year guarantee period. Casals will attempt to conduct repairs within reasonable industry standards but cannot be held responsible or liable for any circumstances not under their control.

Before returning your product, check for the following:

1. Your household mains supply socket is working and switched on.
2. The mains supply circuit is not overloaded (White trip switch on your DB board is off).
3. You have read the trouble shooting guide in your Instructions for Use.
4. All accessories and parts are present.

If service or repair becomes necessary outside the guarantee period, this service is still available however all transport/postage, spares and labour costs will be paid by the consumer. All chargeable repairs will require the consumers' approval in writing once the quote is accepted. Once the go-ahead has been received Casals will undertake to conduct the repair within a reasonable time and maintain the condition of the product as received.

For any assistance, service, queries and complaints please contact our Customer Care on 086 111 5006 or e-mail help@creativehousewares.co.za.

Be on the look-out for these Casals products at your local outlet:



CD4800RE



CS1200RE



IDR500REA



ID710REA



RHD1050



MFS180



BS76-710



OS150



PL82-650



HAF2000A



AG115-500



AG115-710



AG230-710



SP1200



JS55A



DBS900



MFS400



1200EA



CS184L

Durban
35 Adrain Road, Windermere,
Durban, South Africa, 4001
Tell: +27 31 303 3465
Fax: +27 31 303 8259

creative housewares

🏠 20 Tekstiel Street, Parow, Cape Town, 7493, South Africa
 📮 P.O. Box 6156 Parow East, 7501, South Africa
 ☎ +27 21 931 8117 📞 +27 21 931 4058
 Service Centre Helpline: 086 111 5006
 🌐 www.creativehousewares.co.za

Johannesburg
Unit 25 & 26 San Croy Office Park
Die Agora Road, Croydon, 1619
Tell: +27 11 392 5652
Fax: +27 11 392 1694

