

**casals** 



**2000W Lawn Mower**



COMPLIES WITH  
INTERNATIONAL  
IEC60335  
SAFETY SPECIFICATIONS



2000W

2 YEAR  
WARRANTY

Model:  
LM2000E

**PLEASE READ ALL INSTRUCTIONS BEFORE USE**

## IMPORTANT:

Thank you for purchasing a Casals Electric Lawn mower (hereinafter referred to as the "Power tool"). This manual will assist you in operating and maintaining your power tool. This manual is the latest version. With the continuous improvement and upgrading of this product, the manufacturer reserves the right to modify this manual without notice. The manufacturer shall assume no liability for incorrect information contained in this manual. This manual is an integral part of the power tool. When the power tool is transferred to others, this manual should be handed over to the new owner. The users should pay special attention to these instructions.

## IMPORTANT:

The range of CASALS Outdoor Power tools is safe and reliable, but incorrect use of these products may cause personal injury and or damage to your machine. Please read this manual thoroughly before attempting to operate or assemble as this product is required to operate strictly in accordance with this manual.

## WARNING

Read and understand all instructions. Save these instructions. Failure to follow all instructions listed below may result in electric shock, fire and or serious injury. The term 'power tool' in all of the warnings below refers to your mains-operated (corded) power tool.

## KNOW YOUR LAWN MOWER

Read this manual carefully, observing the recommended safety instructions before, during and after using your lawn mower. Following these simple instructions will also maintain your lawn mower in good working order. Familiarize yourself with the controls

on your mower before attempting to operate it, but above all, be sure you know how to stop your mower in an emergency. Retain this user manual and all other literature with your mower for future reference.

## SYMBOLS MARKED ON THE PRODUCT



Read this instruction book carefully before using the lawn mower and keep it in a safe place for future reference.



Keep bystanders away.



Beware of sharp blades. Blades continue to rotate after the motor is switched off.



Remove the plug from the machine before maintenance or if cord damaged.



Keep the supply flexible cord away from the cutting blades.



**CAUTION!** Unusable power tools do not belong with domestic waste. They must be taken to a communal collecting point for environmentally friendly disposal in accordance with local regulations.



Noise level marking  
Your tool noise is not more than 96dB.

## DOUBLE INSULATED



Your mower is double insulated. This means that all external parts are electrically isolated from the power supply. This is achieved by placing an extra insulation barrier between the electrical and mechanical parts.

## Parts Description

1. Upper handle
2. Safety push-button
3. Switch box
4. Locking knob
5. Plug
6. Grass catcher
7. Lower deck
8. Upper deck
9. Motor cover
10. Height adjusting lever
11. Lower handle
12. Cable clamp
13. Switch handle
14. Wheel



Fig.1A

## 2. GENERAL SAFETY RULES

The purpose of the safety rules is to attract your attention to possible dangers. The safety symbols and the explanations with them, require your careful attention and understanding. The safety warnings do not by themselves eliminate any danger. The instruction or warnings they give are not substitutes for proper accident prevention measures.

**WARNING:** Failure to obey a safety warning can result in serious injury to yourself or to others. Always follow the safety precautions to reduce the risk of fire, electric shock and personal injury. Save owner's manual and review frequently for continuing safe operation and instructing others who may use this tool.

**WARNING:** This machine produces an electromagnetic field during operation. This field may under some circumstances interfere with active or passive medical implants. To reduce the risk of serious or fatal injury, we recommend persons with medical implants to consult their physician and the medical implant manufacturer before operating this machine.

**WARNING:** The operation of any tool can result in foreign objects being thrown into your eyes, which can result in eyes severely damaged. Before beginning power tool operation, always wear safety goggles or safety glasses with side shields and a full face shield when needed. We recommend Wide Vision Safety Mask for use over eyeglasses or standard safety glasses with side shield.

**IMPORTANT**  
**READ CAREFULLY BEFORE USE.**  
**KEEP FOR FUTURE REFERENCE.**

- 1) Read the instructions carefully. Be familiar with the controls and the proper use of the equipment;
- 2) Never allow children or people unfamiliar with these instructions to use the lawnmower. Local regulations can restrict the age of the operator
- 3) Never mow while people, especially children, or pets are nearby;
- 4) Keep in mind that the operator or user is responsible for accidents or hazards occurring to other people or their property.
- 5) While mowing, always wear substantial footwear and long trousers. Do not operate the equipment when barefoot or wearing open sandals; Avoid wearing clothing that is loose fitting or that has hanging cords or ties.
- 6) Thoroughly inspect the area where the equipment is to be used and remove all objects which can be thrown by the machine.
- 7) Before using, always visually inspect to see that the blades, blade bolts and cutter assembly are not worn or damaged. Replace worn or damaged blades and bolts in sets to preserve balance. Replace damaged or unreadable labels.
- 8) Before use check the supply and extension cord for signs of damage or worn. If the cord becomes damaged during use, disconnect the cord from the supply immediately. **DO NOT TOUCH THE CORD BEFORE DISCONNECTING THE SUPPLY.** Do not use the appliance if the cord is damaged or worn.
- 9) Mow only in daylight or in good artificial light.
- 10) Avoid operating the equipment in wet grass.
- 11) Always be sure of your footing on slopes.
- 12) Walk, never run.
- 13) For wheeled rotary machines; mow across the face of slopes, never up and down.

14) Exercise extreme caution when changing direction on slopes.

15) Do not mow excessively steep slopes.

16) Use extreme caution when reversing or pulling the lawnmower towards you.

17) Stop the blades if the lawnmower has to be tilted for transportation when crossing surfaces other than grass, and when transporting the lawnmower to and from the area to be mowed.

18) Never operate the lawnmower with defective guards, or without safety devices, for example deflectors and/or grass catchers, in place.

19) Start or switch on the motor carefully according to instructions and with feet well away from the blades.

20) Do not tilt the lawnmower when switching on the motor.

21) Do not start the motor when standing in front of the discharge chute.

22) Do not put hands or feet near or under rotating parts, Keep clear of the discharge opening at all times.

23) Never pick up or carry a lawnmower while the motor is running.

24) Stop the motor and disconnect the plug. Make sure that all moving parts have come to a complete stop.

- Whenever you leave the machine;

- Before clearing blockages or unclogging chute.

- Before checking, cleaning or working on the lawnmower.

- After striking a foreign object. Inspect the lawnmower for damage and make repairs before restarting and operating the lawnmower.

If the lawnmower starts to vibrate abnormally (check immediately).

- Inspect for damage.

- Replace or repair any damage parts.

- Check for and tighten any loose parts.

25) Stop the mower:

- Whenever you leave the lawnmower.

26) Keep all nuts, bolts and screws tight to be sure the equipment is in safe working condition.

27) Check the grass catcher frequently for wear or deterioration.

28) Replace worn or damaged parts for safety.

29) Do not use the lawnmower if the cords are damaged or worn

30) Do not connect a damaged cord to the supply or touch a damaged cord before it is disconnected from the supply. A damaged cord can lead to contact with live parts.

31) Do not touch the blade before the machine is disconnected from the supply and the blade have come to a complete stop.

32) Keep extension cords away from the blade. The blade can cause damage to the cords and lead to contact with live parts.

33) Disconnect the supply (i.e. pulling the plug from the socket)

- whenever leaving the machine untended

- before clearing a blockage

- before checking, cleaning or working on the machine

- after striking a foreign object

- whenever the machine starts vibrating abnormally

34) Children are not allowed to use the machine.

35) This appliance is not intended for use by persons with reduced physical, sensory or mental capabilities, or lack of experience and knowledge, unless they have been given supervision or instruction concerning use of the appliance by a person responsible for their safety.

36) If the external flexible cable or cord is damaged, it shall be exclusively replaced by the manufacturer or his service agent or a similar qualified person in order to avoid a hazard (not lighter than H05VV-F 2x1.0mm<sup>2</sup>)

37) Instructions for the safe operation of the appliance, including a recommendation that the appliance should be supplied via a Residual Current Device (RCD) with a tripping current of not more than 30 mA.

38) Always allow the machine to cool before storing.

39) When servicing the blades be aware that, even though the power source is switched off, the blades can still be moved.

40) Replace worn or damaged parts for safety. Use only genuine replacement parts and accessories.

#### 4. TECHNICAL DATA

Model:	LM2000E
Rated Voltage:	230-240V~
Rated Frequency:	50Hz
Rated Power:	2000W
No Load Speed:	3500/min
Grass catcher capacity	45L
Cutting Width:	420mm
Net weight:	13.8kg
Degree of protection against liquid:	IP24
Height adjustment :	20-70mm, 6 adjustment

	LM2000E
Sound pressure level at the operator's position	83dB(A) K=3 dB(A)
Measured sound power level	93.4dB(A) K=2.13dB(A)
Measured sound power level	93.4dB(A) K=2.13dB(A)
Guaranteed Sound Power level	96dB(A)
Vibration	max.2.88m/s <sup>2</sup> K=1.5 m/s <sup>2</sup>

## 5. ASSEMBLY

### 5-1 ASSEMBLY THE FOLDING HANDLE

A) Fix the lower handlebars into the unit body with locking knobs as Fig. 2A,/Fig.2B/ Fig.2C shown.

B) Connect the upper handle and the lower handle with the locking knob.

(Fig.2D/Fig.2E/Fig.2F)

C).Attach the cable clamp to the position shown and then attach the cable (Fig.2G)



Fig. 2A



Fig. 2B



Fig. 2C

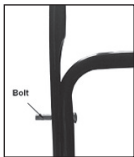


Fig. 2D

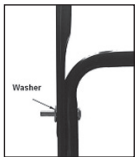


Fig. 2E

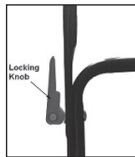


Fig. 2F

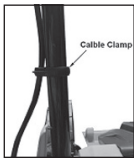


Fig. 2G

### 5-2 ASSEMBLY THE GRASS CATCHER

1. To fit: Raise the rear cover and hitch the grass catcher on rear of mower. (Fig.3A/ Fig.3B/Fig.3C)

2. To remove: grasp and lift the rear cover, remove grass catcher.

There is a level indicator on the top of the grass catcher that shows whether the catcher is empty or full :

- The level indicator inflates if the catcher is not full during the moving. (Fig. 3E)

- If the catcher is full, the indicator co lapses; once this happens, stop moving immediately and empty the catcher, make sure it is clean and ensure its meshwork is ventilated. (Fig. 3D)

### IMPORTANT:

If the position of indicator opening is very dirty, the indicator will not inflate-in this case, clean the position of indicator opening immediately.



Fig. 3A



Fig. 3B



Fig. 3C



Fig. 3D



Fig. 3E

## 6. ADJUSTMENT OF CUTTING HEIGHT

Apply outward pressure to disengage lever from rack. Move lever forward or back to adjust height.

The height (the blade to the ground) can be adjusted from 20mm (position 1) to 70mm (position 6), 6 height positions. All wheels will be in the same height of cut.



Fig. 3D



Fig. 3E

**WARNING:** Make this adjustment only when the blade is stopped.

**WARNING:** Disconnect the electric cord from the power supply.

## 7. SAFETY PRECAUTIONS

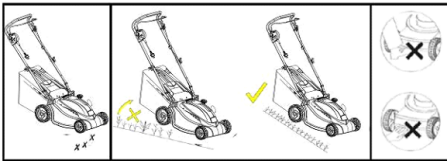
- Always operate with the deflector or grass catcher in the correct position.
- Always stop the motor before removing the grass catcher or adjusting the height of cutting position.

1. Before mowing, remove all foreign objects from the lawn which may be thrown by the machine.

While mowing, stay alert for any foreign objects which may have been missed. (Fig.5A)

2. Never lift the rear of the mower while starting the motor or during normal operation. (Fig.5B)

3. Never place your hands or feet underneath the underpan or into the rear discharge chute while the motor is running. (Fig.5C)



## 8. STARTING

### 8.1 STARTING

Before connecting up the lawn mower to the electric power supply, make sure that the mains supply voltage is 230-240V~ 50Hz. Before start the lawn mower, fix the extension cord with the machine as the Fig.6A / Fig.6B shown.



Fig. 6A



Fig. 6B

Start the motor as follows (Fig.6C)

a) Press the safety push-button (1).

b) and at the same time, pull the switch handle

(2), to keep motor running, keep holding the switch handle.

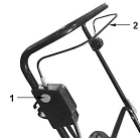


Fig. 6C

If you release the switch handle, the motor will stop.

**CAUTION!** The blade starts turning as soon as the motor is started.

**WARNING!** The blade will continue to rotate after the motor is switch off.

### 8.2 FOR THE BEST RESULTS WHEN MOWING

Clear lawn of debris. Be sure that the lawn is clear of stones, sticks, wire or other foreign objects which could be accidentally thrown out by the mower in any direction and cause serious personal injury to the operator and others as well as damage to property and surrounding objects. Do not cut wet grass. For effective mowing do not cut wet grass because it tends to stick to the underside of the deck preventing proper mowing of the grass clippings. Cut no more than 1/3 the length of the grass. The recommended cut for mowing is 1/3 the length of the grass.



**WARNING:** if you strike a foreign object, stop the motor. Pull out the mains plug, thoroughly inspect the mower for any damage and repair the damage before restarting and operating the mower. Extensive vibration of the mower during operation is an indication of damage. The unit should be promptly inspected and repaired.

## 9. BLADE

The blade is made of pressed steel. It is allowed to resharpen the blade with a grinding wheel when necessary.

Ensure that it is always balanced (an unbalanced blade will cause dangerous vibrations). To check for balance, insert a round rod through the central hole and support the blade horizontally. A balance blade will remain horizontal. If the blade is not balanced the heavy end will rotate downwards. Resharpen the heavy end until the blade is evenly balanced. To remove the blade (1), unscrew the blade screw (2), and replace any parts, which are damaged. When reassembling, make sure that the cutting edges face in the direction of the motor rotation. The blade screw (2) must be torque to 20N.m.

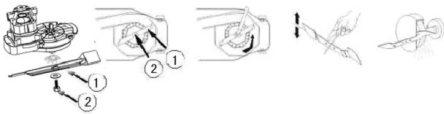


Fig. 7

**WARNING:** Disconnect the electric cord from the power supply.

**WARNING:** Protect hands by using heavy gloves or a rag to grasp the cutting blades when replace the blade.

## 10. EXTENSION CORDS

You should only use extension cords for outdoor use, PVC ordinary duty with a cross

sectional area not less than 1.0mm<sup>2</sup>(not lighter than H05VV-F 2x1.0mm<sup>2</sup>)

Before using, check the supply and extension cords for signs of damaged during use, disconnect the cord for signs of damage or aging. If the cord becomes damaged during use, disconnect the cord from the supply immediately. **DO NOT TOUCH THE CORD BEFORE DISCONNECTING THE SUPPLY.** Do not use the appliance if the cord is damaged or worn. Keep extension cord away from cutting elements.

Warning: Always ensure that the ventilation openings are kept clear of debris.

## 11. MAINTENANCE AND CARE

**Warning:** Before performing any Maintenance or cleaning work, Always pull out the mains plug!

Do not spray the unit with water. Water may destroy the Switch-plug combination unit and the electric motor. Clean the unit with a cloth, hand brush, etc.

Expert inspection is required, do not make any adjustment by yourself, must contact to customer Service centre:

- a) if the lawn mower strikes an object.
- b) if the motor stops suddenly.
- c) if the blade is bent (do not align!)
- d) if the motor shaft is bent (do not align!)
- e) if a short-circuit occurs when the cable is connected.
- f) If the gears are damaged.
- g) Use only manufacturer's recommended replacement parts and accessories.

## 12. TROUBLESHOOTING

**Warning:** Before performing any maintenance or cleaning work, always pull out the mains plug and wait until the cutter has come to a standstill.

**CAUTION!** Faults which cannot be rectified with the aid of this table may be rectified by a specialist company only (customer service centre).

Fault	Remedial action
Motor does not run	Check mains connection cable Start on short grass or on an area which has already been mown. Clean discharge channel/housing –the mowing blade must rotate freely. Correct the cutting height. Check if motor carbon brush are worn.
Motor power drops	Correct the cutting height. Clean discharge channel/housing Have mowing blade resharpened /replaced customer Service centre.
Grass catcher is not filled	Correct the cutting height Allow the lawn to dry Have mowing blade resharpened /replaced customer Service centre. Clean the grille on the grass catcher Clean the discharge channel /housing



## 2 YEAR GUARANTEE

Casals guarantees that this product has been thoroughly inspected and tested before being dispatched and is free from mechanical and electrical defects and complies with the applicable safety standards. However, should defects due to faulty material or workmanship develop, under normal domestic use, within 6 months from the date of purchase please return the product to the store from where it was purchased for a full refund or replacement.

### The following conditions apply:

1. Please ensure you retain your receipt as this must be presented when making a claim under the terms of the guarantee. It is impossible to determine the guarantee period without proof of purchase, so please keep this in a safe place.
2. If a refund or exchange is required the product must be complete with all accessories, parts and packaging.
3. Missing parts will render the guarantee void.
4. Upon receipt of your appliance check it for any transport damage to ensure it is safe for use. Return it to the store as soon as possible for exchange if damaged. The guarantee is void if products are damaged after use, so please do not use the damaged product.
5. Your product is designed for normal domestic household use. Failure to read and comply with the instructions for use, cleaning and maintenance will render your guarantee void, so please read these instructions carefully to ensure your safety, and get the most effective use from the product.
6. **Any abuse, negligent, improper use will render the guarantee void and Creative Housewares (Pty) Ltd will not be liable for any loss or damage.**
7. This Guarantee will not apply if this tool is damaged by accident or from normal wear and tear.
8. Any attempted repair, or replacement of unauthorised parts will render the guarantee void, so please contact an authorised service centre or agent for any service or repair requirements.
9. **Accessories such as bits, blades, sanding disc, cutting lines, etc are excluded from this guarantee.**
10. **Normal consumables parts, such as carbon brushes, bearings, chucks, cord assembly's, spark plugs, recoil pulleys and bump head assembly's are specifically excluded from this guarantee.**

### Extended 24 Month Limited Guarantee

- Casals takes pride in their product quality and therefore offer an extended 24 month limited guarantee from the original date of purchase to offer the consumer peace of mind on their purchase.
- Should defects due to faulty material or workmanship develop, under normal domestic use, within 24 months from the original date of purchase, please return the product to the store from where it was purchased for repair free of charge.
- Casals will however replace a product, if the cost of the repair is not commercially viable or if their ability to conduct repair effectively cannot be guaranteed.
- **NB:** The guarantee on replaced products will be from the original date of purchase.
- All repairs carry a 3 month guarantee even if this falls outside of the 2 year guarantee period. Casals will attempt to conduct repairs within reasonable industry standards but cannot be held responsible or liable for any circumstances not under their control.

### Before returning your product, check for the following:

1. Your household mains supply socket is working and switched on.
2. The mains supply circuit is not overloaded (White trip switch on your DB board is off).
3. You have read the trouble shooting guide in your Instructions for Use.
4. All accessories and parts are present.

If service or repair becomes necessary outside the guarantee period, this service is still available however all transport/postage, spares and labour costs will be paid by the consumer. All chargeable repairs will require the consumers' approval in writing once the quote is accepted. Once the go-ahead has been received Casals will undertake to conduct the repair within a reasonable time and maintain the condition of the product as received.

For any assistance, service, queries and complaints please contact our Customer Care on 086 111 5006 or e-mail [help@creativehousewares.co.za](mailto:help@creativehousewares.co.za).

# Be on the look-out for these Casals products at your local outlet:



CD4800RE



CS1200RE



IDR500REA



ID710REA



RHD1050



MFS180



BS76-710



OS150



PL82-650



HAF2000A



AG115-500



AG115-710



AG230-710



SP1200



JS55A



DBS900



MFS400



1200EA



CS184L

Durban  
35 Adrain Road, Windermere,  
Durban, South Africa, 4001  
Tell: +27 31 303 3465  
Fax: +27 31 303 8259

## creative housewares

🏠 20 Tekstiel Street, Parow, Cape Town, 7493, South Africa  
 📮 P.O. Box 6156 Parow East, 7501, South Africa  
 ☎ +27 21 931 8117 📞 +27 21 931 4058  
 Service Centre Helpline: 086 111 5006  
 🌐 www.creativehousewares.co.za

Johannesburg  
Unit 25 & 26 San Croy Office Park  
Die Agora Road, Croydon, 1619  
Tell: +27 11 392 5652  
Fax: +27 11 392 1694

